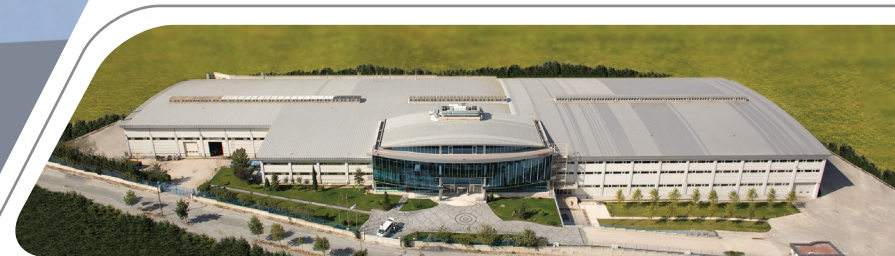


 **KABAN**

ENGLISH

**ALUMINIUM**





## ***Ahead in every round...***

Kaban Machine aims to be the symbol of invariability and reputation for all customers by offering products of universal quality and standards.



KABAN, which was established in 1986, is one of the biggest Pvc and Aluminium joinery machine manufacturers of the world. KABAN, continues to offer superior quality and modern design products to its day by day growing customer portfolio thanks to its advanced production technology and experienced staff. KABAN has gained confidence of door - window producers not only with its high technology machines but also with after sales service and spare part service.

It shows the importance given to the technology once again by making new investments in his KABAN / Hadımko facility which has a 30.000 sqm closed area. The difference of KABAN is offering satisfactory quality and price for high technology products. The concept of making the job properly and completely lies on the basis of its success and this understanding is adopted by all its workers and has become the common culture of Kaban.

*For More Than 35 Years  
We invest for you.*

## EUROPE

ALBANIA	MACEDONIA
AUSTRIA	MOLDOVA
BELARUS	MONTENEGRO
BELGIUM	NETHERLANDS
B. HERZEGOVINA	POLAND
BULGARIA	PORTUGAL
CROATIA	ROMANIA
CZECH REPUBLIC	RUSSIA
DENMARK	SERBIA
FRANCE	SLOVAKIA
GERMANY	SLOVENIA
GREECE	SPAIN
HUNGARY	SWEDEN
ITALY	SWITZERLAND
KOSOVA	TRNC
LATVIA	UKRAINE
LITHUANIA	U. KINGDOM

## ASIA

AFGHANISTAN	MONGOLIA
ARMENIA	MYANMAR
AZERBAIJAN	OMAN
BAHRAIN	PAKISTAN
CAMBODIA	PHILIPPINES
CHINA	QATAR
GEORGIA	RUSSIA
INDIA	SAUDI ARABIA
IRAN	SINGAPORE
IRAQ	SYRIA
ISRAIL	TAJIKISTAN
JORDAN	THAILAND
KAZAKHSTAN	TURKMENISTAN
KUWAIT	U.A.E
KYRGYZSTAN	UZBEKISTAN
LEBANON	VIETNAM
MALAYSIA	YEMEN

## N. AMERICA

U.S.A  
CANADA  
CUBA  
DOMINICAN REPUBLIC  
MEXICO  
HONDURAS  
PANAMA

## OCEANIA

AUSTRALIA  
NEW ZEALAND

## S. AMERICA

ARGENTINA  
BRAZIL  
CHILE  
COLOMBIA  
ECUADOR  
PARAGUAY

## AFRICA

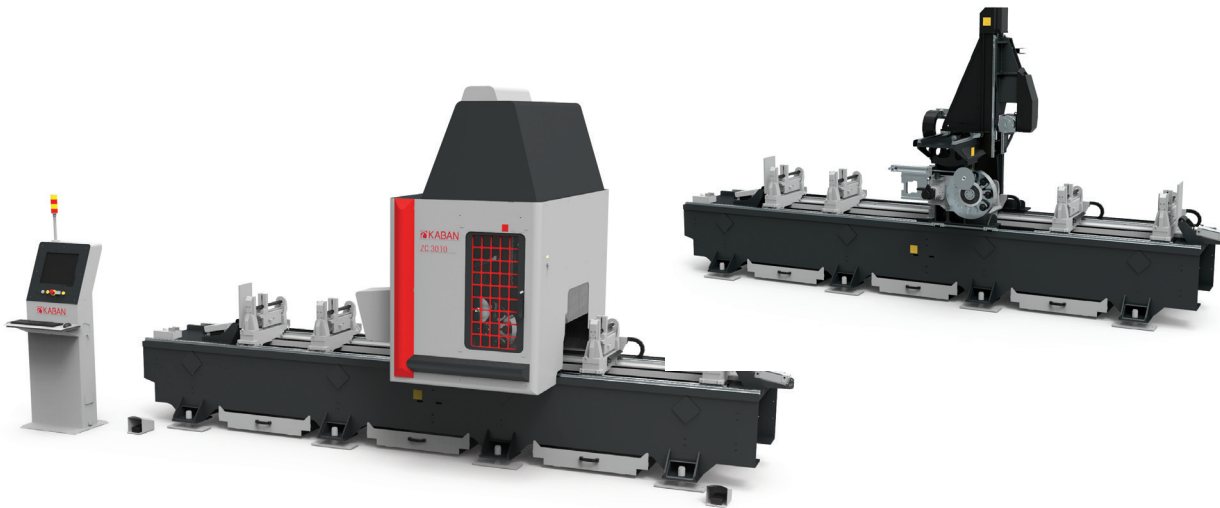
ANGOLA	MOROCCO
ALGERIA	MAURITIUS
COM. ISLANDS	NIGERIA
CONGO	SENEGAL
EGYPT	SOUTH AFRICA
ETHIOPIA	SUDAN
GHANA	TANZANIA
KENYA	TUNISIA
LIBYA	ZAMBIA
MAURITANIA	



The countries we made sales and supplied service.

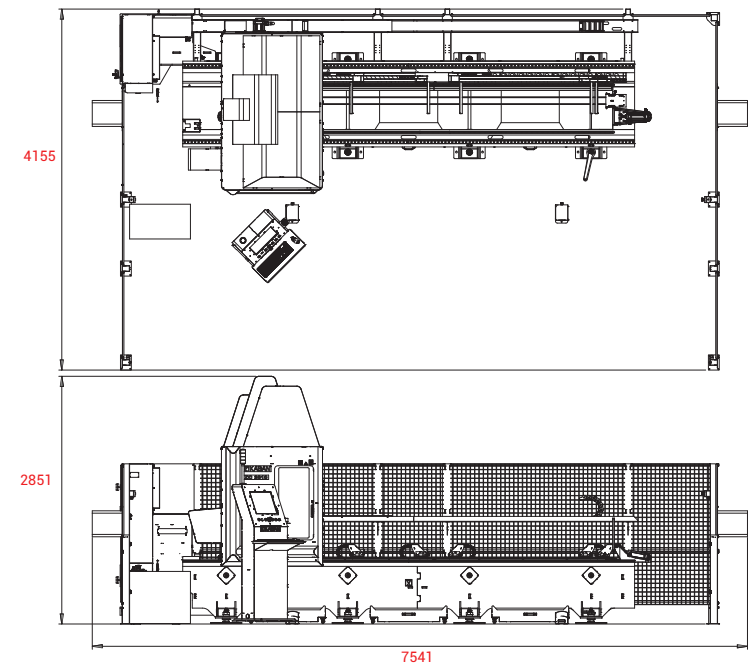
# ZC 3010 / ZC 3020

## 4 Axis Aluminium Machining Center




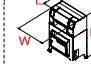

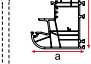
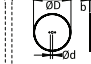



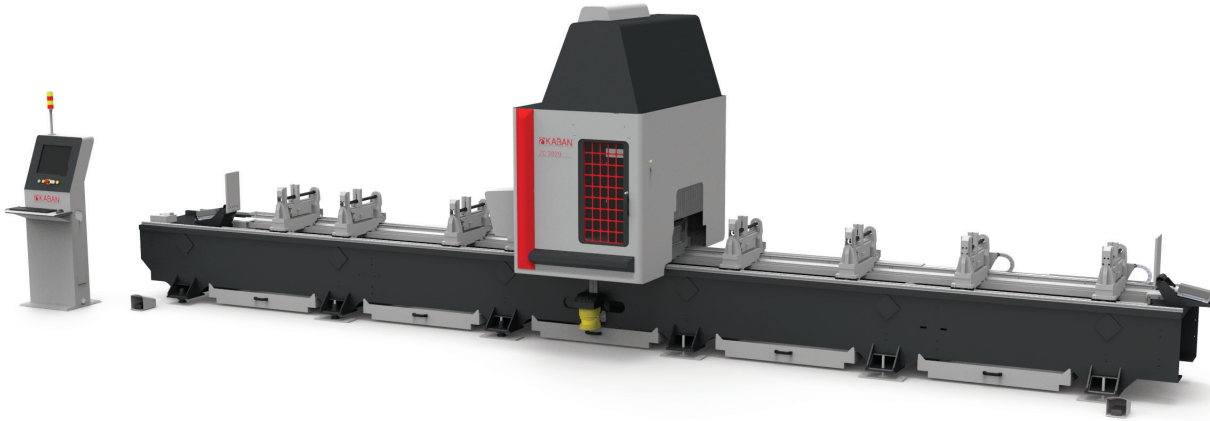
### ZC 3010 General Features

- Robust Mechanical Design for high speed and acceleration.
- It provides maximum performance as it is produced using high quality materials.
- Long-life moving parts with automatic lubrication system.
- The standard model has 3 chip buckets, 6 clamps and 8 tool holders.
- Mitsubishi CNC M720VW control unit, internal HDD, optical communication, high speed and precision, 0.001 mm command increment and ethernet interface.
- In case of power failure, the spindle is automatically recovered from the profile by means of a program. The machine computer is protected by UPS. In this way, the remaining program can be restarted from where it left off.
- It provides the opportunity to work in double zone with right and left stoppers.
- With the optional 90° tool, it can process the bottom surface of the profile.
- Profile length and width measurements can be made with the optional probe.
- The absence of any material that could be damaged in the areas where sawdust and wastes fall provides a long life.



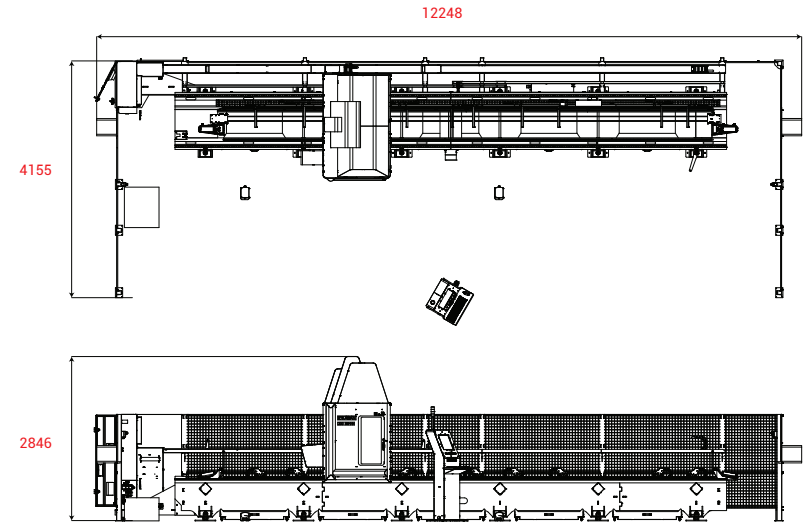
### ZC 3010

 400 V (50-60 Hz) (kW)	 6-8 bar (l/dk)	 kg	 W x L x H (mm)	 L <sub>(min.)</sub> x L <sub>(max.)</sub> (mm)	 a x h (mm)	 ØD x Ød x b (mm)	 X x Y x Z (mm)
23	450	5300	7541 x 4155 x 2851	4100 x 8203	400 x 300	200 x 32 x 2	4530 x 1075 x 710






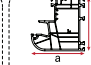
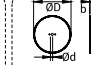
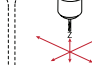


## ZC 3020 General Features

- Robust Mechanical Design for high speed and acceleration.
- It provides maximum performance as it is produced using high quality materials.
- Long-life moving parts with automatic lubrication system.
- The standard model has 5 chip buckets, 10 clamps and 8 tool holders.
- Mitsubishi CNC M720VW control unit, internal HDD, optical communication, high speed and precision, 0.001 mm command increment and ethernet interface.
- In case of power failure, the spindle is automatically recovered from the profile by means of a program. The machine computer is protected by UPS. In this way, the remaining program can be restarted from where it left off.
- Thanks to the field scanner and right-left stoppers, it provides continuous operation.
- With the optional 90° tool, it can process the bottom surface of the profile.
- Profile length and width measurements can be made with the optional probe.
- The absence of any material that could be damaged in the areas where sawdust and wastes fall, provides a long life.



### ZC 3020

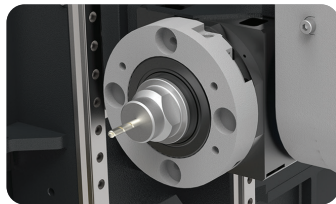
 400 V (50-60 Hz) (kW) 23	 6-8 bar (t/dk) 450	 kg 7410	 W x L x H (mm) 12248 x 4155 x 2846	 L (min.) x L (max.) (mm) 8451 x 16000	 a x h (mm) 400 x 300	 ØD x Ød x b (mm) 200 x 32 x 2	 X x Y x Z (mm) 8885 x 1075 x 710
--	--	---	--	---	--	---	--

### Control Panel



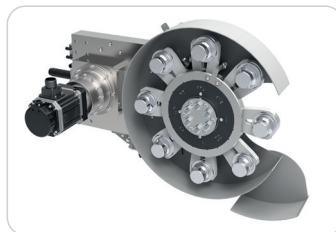
- Easy to use and flexible operating system and interface.
- Mitsubishi CNC control unit.
- Numerical processing with G-Code transferred from CAD-CAM software.
- It communicates with programs that extract .ncx files.
- High performance machine management.
- Easy parameter settings.
- It has periodic maintenance reminder function.
- Service support with remote connection.
- Usb and Com Port input.

### Spindle



- Torque-boosted servo control with spinea 0,01° gap positioning.
- HSD brand spindle which has thermostat sensor with liquid cooling 12 kW max. 24,000 rpm.
- Tool cooling system with oil-air mixture spraying, speed adjustment and liquid level sensor.
- HSK tool holder and tool holder cleaning system.
- Tool change security protocols written to reduce operator errors as much as possible.

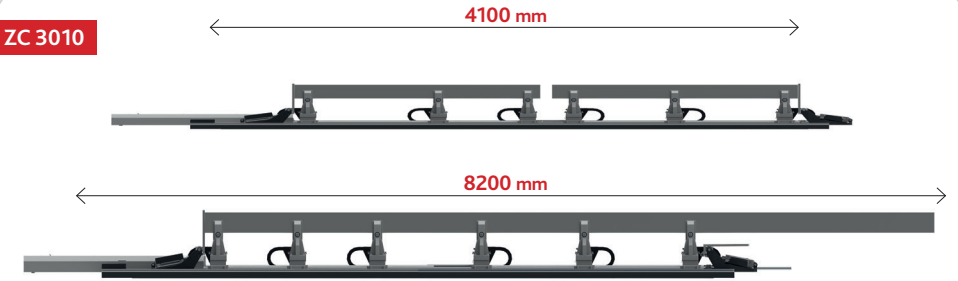
### Magazine



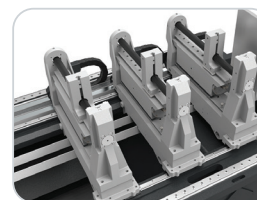
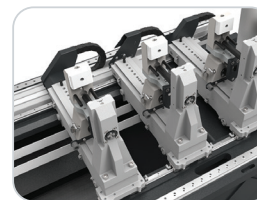
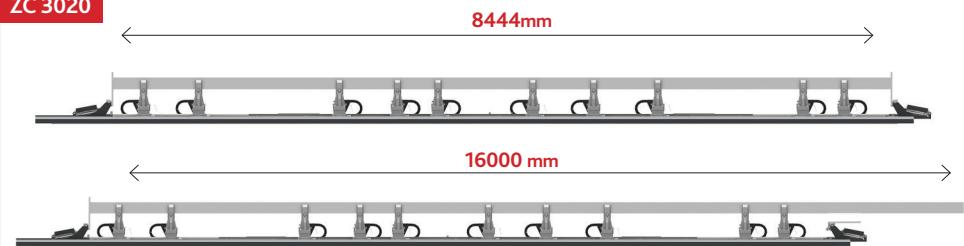
- 8 tool capacity magazine.
- Tool change feature in 8 seconds.
- Easy access from the front to change the tools from the magazine.
- It allows to save time by changing the tool when passing from one operation to another one on the piece.
- Ø200mm saw can be installed.

### Clamps

#### ZC 3010



#### ZC 3020

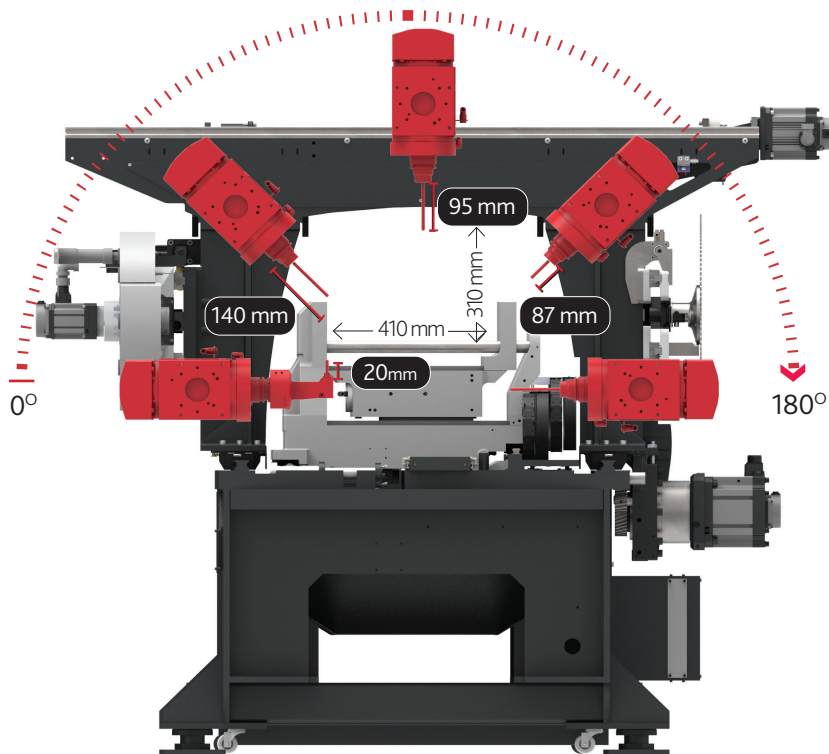
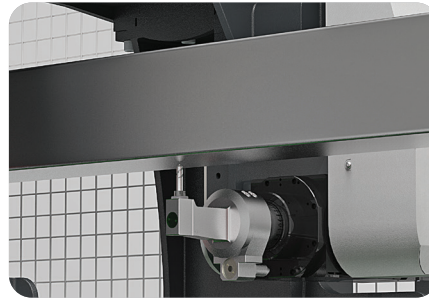


- Since the clamp constants are at the front, the profile loading process is very easy.
- The standard module has 6 clamps with 2 types.
- Roller system of the surfaces where the profile is placed provides the comfort of profile sliding.
- According to the receipts on the workpiece, the clamps receive servo-controlled automatic position.
- Easy piece referencing with double-sided profile support system.
- Long length profile processing is available. With Ø200 mm saw blade, it makes milling from the ends of the profiles.
- Thanks to the pressure regulator, the clamp tightness can be adjusted according to the profile thickness.

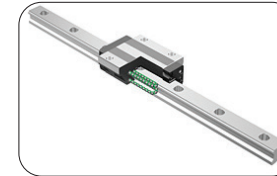


## A Axis

- It processes profiles of aluminum, plastic and wood materials in width and height shown in the picture.
- The tool sizes according to the direction and the piece is shown in the picture below.
- 4 Axis simultaneous operation feature.



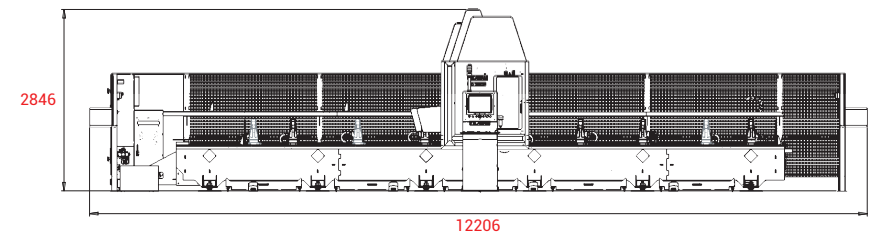
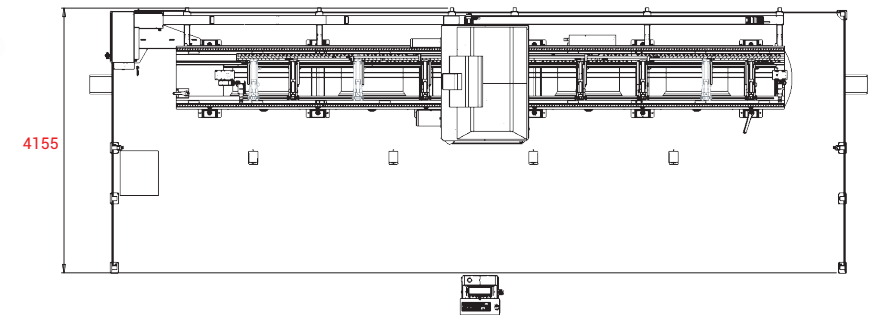
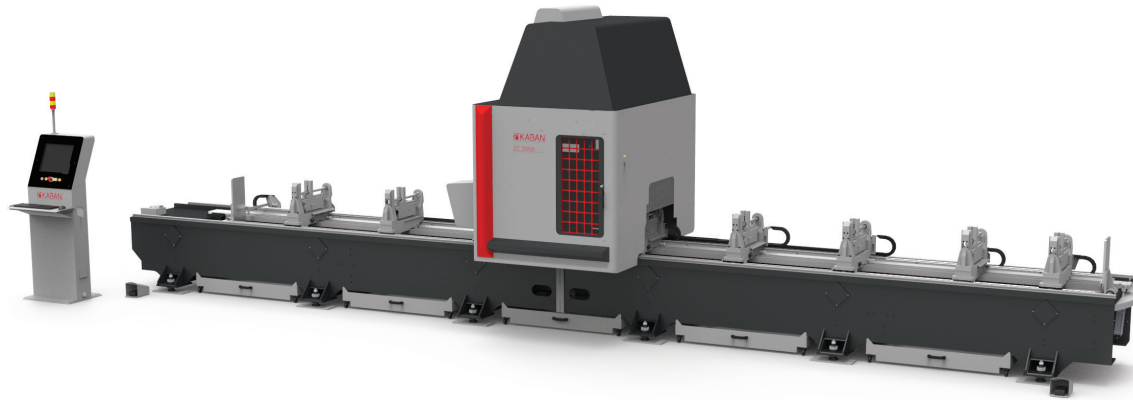
## Bearing System



- High quality bearings suitable for high speeds whose gap class is zero.

ZC 3010					
Motor Specifications	Power (kW)	Motor Speed (rpm)	Angular Speed (°/dk)	Axis Speed (m/dk)	Reductor
Spindle Motor (HSD ES779)	12,00	24000	-	-	-
X Axis Servo Motor	3,50	3000	-	144	PSFN 140 - i:10
Y Axis Servo Motor	1,50	4000	-	40	-
Z Axis Servo Motor	1,00	3000	-	30	-
A Axis Servo Motor	0,75	4000	160	-	Spinea i:115
C Axis Servo Motor	-	-	-	-	-
Magazine Servo Motor	0,75	4000	-	-	AD 110 i:61
Clamp Servo Motor	0,75	4000	-	-	SD 90 i:50



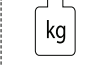
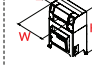

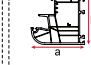
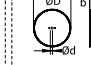
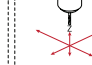
ZC 3020					
Motor Specifications	Power (kW)	Motor Speed (rpm)	Angular Speed (°/dk)	Axis Speed (m/dk)	Reductor
Spindle Motor (HSD ES779)	12,00	24000	-	-	-
X Axis Servo Motor	3,50	3000	-	144	PSFN 140 - i:10
Y Axis Servo Motor	1,50	4000	-	40	-
Z Axis Servo Motor	1,00	3000	-	30	-
A Axis Servo Motor	0,75	4000	160	-	Spinea i:115
C Axis Servo Motor	-	-	-	-	-
Magazine Servo Motor	0,75	4000	-	-	AD 110 i:61
Clamp Servo Motor	0,75	4000	-	-	SD 90 i:50

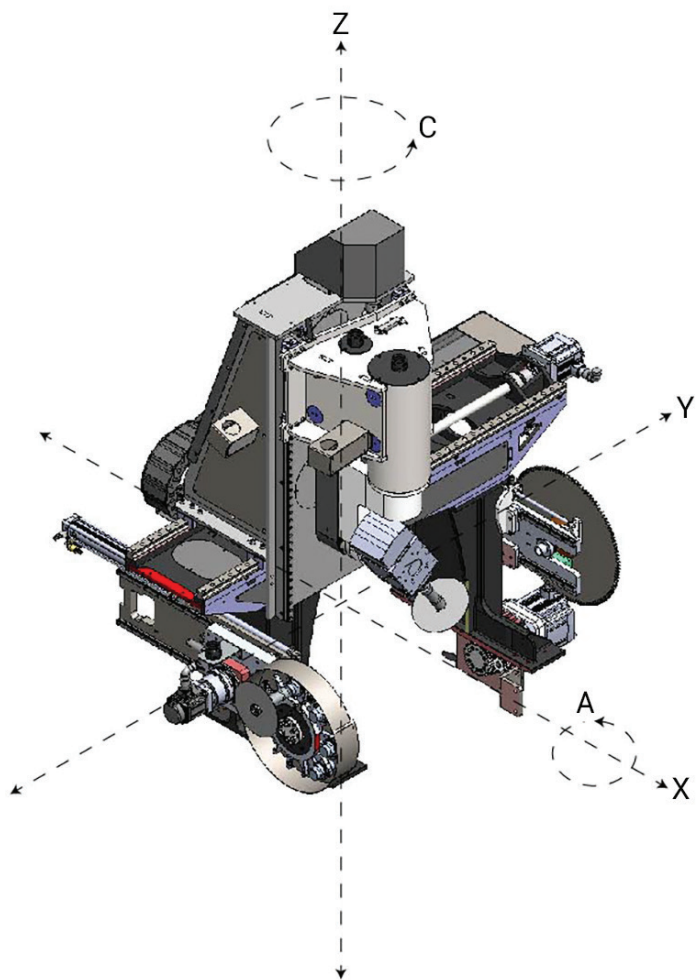


### General Features

- Robust Mechanical Design for high speed and acceleration.
- It provides maximum performance as it is produced using high quality materials.
- Long-life moving parts with automatic lubrication system.
- The standard model has 5 chip buckets, 10 clamps and 8 tool holders.
- Mitsubishi CNC M720VW control unit, internal HDD, optical communication, high speed and precision, 0.001 mm command increment and ethernet interface.
- In case of power failure, the spindle is automatically recovered from the profile by means of a program. The machine computer is protected by UPS. In this way, the remaining program can be restarted from where it left off.
- Thanks to the right-left stoppers, it provides continuous operation.
- With the optional 90° tool, it can process the bottom surface of the profile.
- Profile length and width measurements can be made with the optional probe.
- The absence of any material that could be damaged in the areas where sawdust and wastes fall, provides a long life.

### ZC 3050

 400 V (50-60 Hz) (kW) <b>23,4</b>	 6-8 bar (l/dk) <b>450</b>	 kg <b>8255</b>	 W x L x H (mm) <b>12206 x 4155 x 2846</b>	 L (min.) x L (max.) (mm) <b>8328 x 16000</b>	 a x h (mm) <b>400 x 300</b>	 ØD x Ød x b (mm) <b>200 x 32 x 2 500 x 30 x 4</b>	 X x Y x Z (mm) <b>8885 x 1060 x 725</b>
---	---	--	---	--	---	---	---

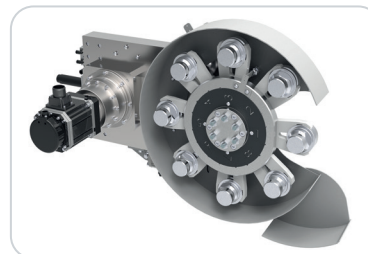


## Spindle



- Torque-boosted servo control with spinea 0,010 gap positioning.
- HSD brand spindle which has thermostat sensor with liquid cooling 12 kW max. 24,000 rpm.
- Tool cooling system with oil-air mixture spraying, speed adjustment and liquid level sensor.
- HSK tool holder and tool holder cleaning system.
- Tool change security protocols written to reduce operator errors as much as possible.

## Magazine



- 8 tool capacity magazine.
- Tool change feature in 8 seconds.
- Easy access from the front to change the tools from the magazine.
- It allows to save time by changing the tool when passing from one operation to another one on the piece.
- Ø200mm saw can be installed.

## Saw



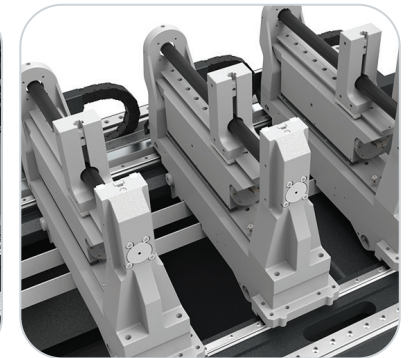
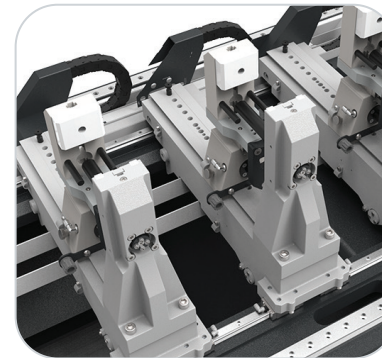
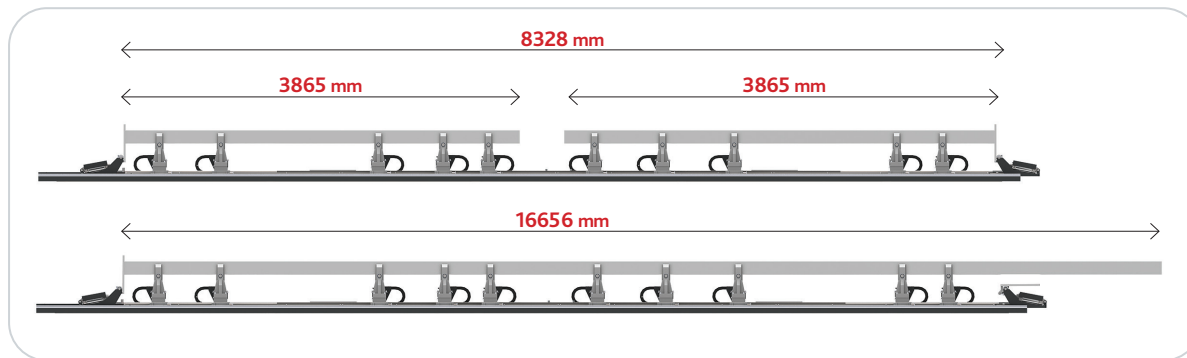
- It has its own magazine.
- Tool change feature in 8 seconds.
- Easy design for saw changing process.
- Up to Ø500mm saw can be mounted.

### Control Panel



- Easy to use and flexible operating system and interface.
- Mitsubishi CNC control unit.
- Numerical processing with G-Code transferred from CAD-CAM software.
- It communicates with programs that extract .ncx files.
- High performance machine management.
- Easy parameter settings.
- It has periodic maintenance reminder function.
- Service support with remote connection.
- Usb and Com Port input.

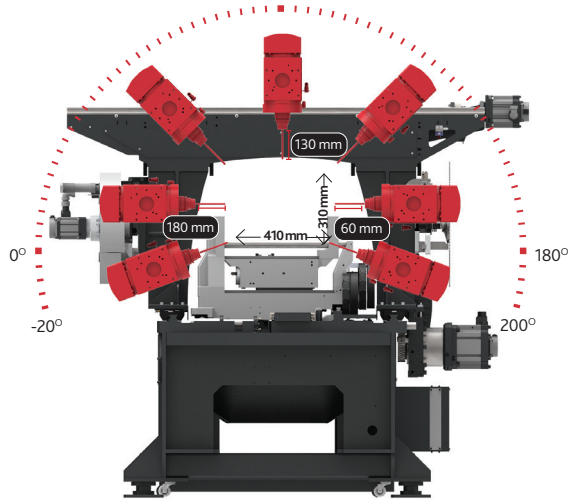
### Clamps



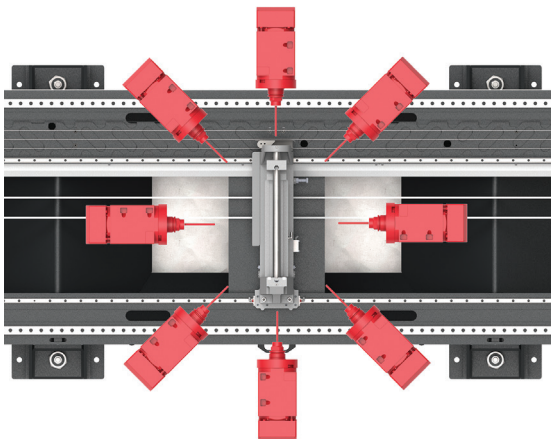
- Since the clamp constants are at the front, the profile loading process is very easy.
- The standard module has 6 clamps with 2 types.
- Roller system of the surfaces where the profile is placed provides the comfort of profile sliding.
- According to the receipts on the workpiece, the clamps receive servo-controlled automatic position.
- Easy piece referencing with double-sided profile support system.
- Long length profile processing is available. With Ø500 mm saw blade, it makes milling from the ends of the profiles.
- Thanks to the pressure regulator, the clamp tightness can be adjusted according to the profile thickness.
- Pieces smaller than 300mm with a single clamp.
- Thanks to the profile conveying system with the clamp, the saw can easily be inserted between the profiles.

## A Axis

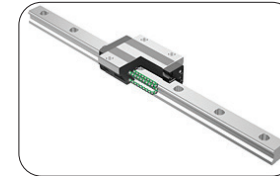
- It processes profiles of aluminum, plastic and wood materials in width and height shown in the picture.
- The tool sizes according to the direction and the piece is shown in the picture below.



## C Axis

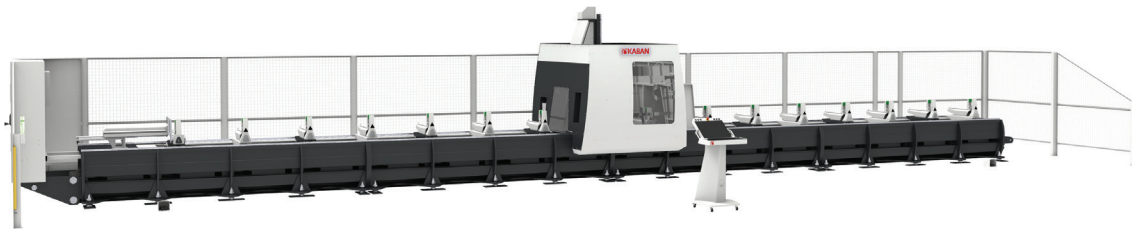


## Bearing System

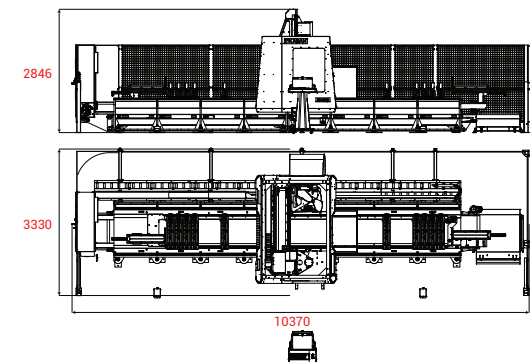


- High quality bearings suitable for high speeds whose gap class is zero.

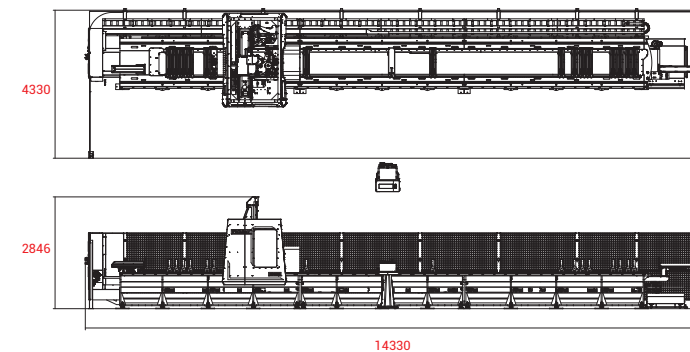
ZC 3050					
Motor Specifications	Power (kW)	Motor Speed (rpm)	Angular Speed (°/dk)	Axis Speed (m/dk)	Reductor
Spindle Motor (HSD ES779)	12,00	24000	-	-	-
X Axis Servo Motor	3,50	3000	-	144	PSFN 140 - i:10
Y Axis Servo Motor	1,50	4000	-	40	-
Z Axis Servo Motor	1,00	3000	-	30	-
A Axis Servo Motor	0,75	4000	160	-	Spinea i:115
C Axis Servo Motor	0,75	4000	210	-	Spinea i:115
Magazine Servo Motor	0,75	4000	-	-	AD 110 i:61
Clamp Servo Motor	0,75	4000	-	-	SD 90 i:50



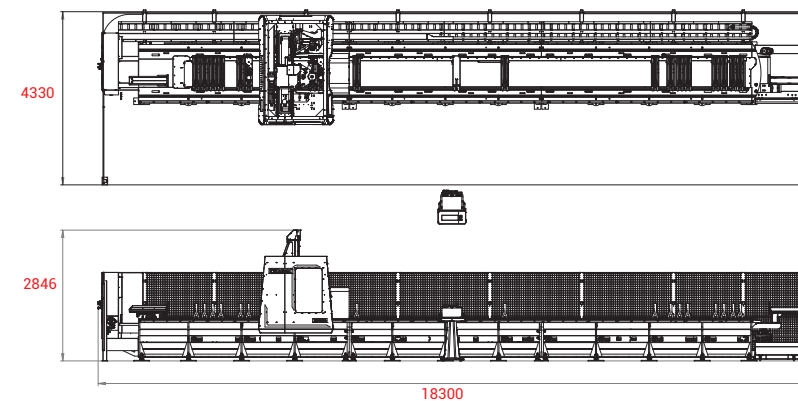
Mod.2



Mod.3



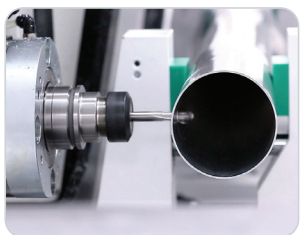
Mod.4



### General Features

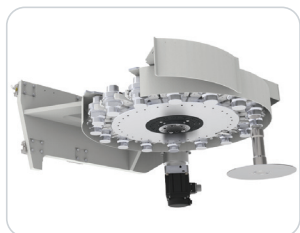
- Safe and continuous (pendular) working.
- Automatic recovery of working shaft from profile by means of a program in case of power outage.
- Protection of machine computer and restarting the interrupted program thanks to UPS.
- The absence of any material that could be damaged in the areas where sawdusts and wastes fall provides a long life.
- Standard model has sawdust conveyor, 10 clamps and tool chuck with 16 tool holding capacity. Number of clamps can be increased optionally.
- Long-life moving parts with automatic lubrication system.
- Robust Mechanical Design suitable for high speed and acceleration.
- Machine management ensuring high performance.
- Mitsubishi CNC M720VW control unit, internal HDD, optical communication, high speed and precision, 0.001mm command increment and Ethernet.

## Spindle



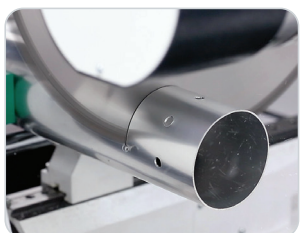
- Torque-boosted servo control with spinea 0,010 gap positioning.
- HSD brand spindle which has thermostat sensor with liquid cooling 12 kW max. 24,000 rpm.
- Tool cooling system with oil-air mixture spraying, speed adjustment and liquid level sensor.
- HSK tool holder and tool holder cleaning system.
- Tool change security protocols written to reduce operator errors as much as possible.

## Magazine



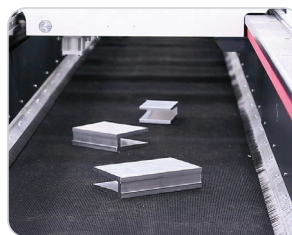
- 16 tool capacity magazine.
- Tool change feature in 8 seconds.
- Time saving by changing the tool when passing from one operation to another one on the piece.
- Ø200mm saw can be mounted.

## Saw



- It has its own magazine.
- Tool change feature in 8 seconds.
- Easy design for saw changing process.
- Up to Ø500mm saw can be mounted.

## Waste Conveyor



- The belt, made of a special material, which continues throughout the entire processing area of the machine, carries the chips and waste falling into this area to the bucket.

## Automatic Tool Length Measuring



- Tool length measurement is performed at any time with an accuracy of 0.05%. If there is a difference between the value entered in the CAM program and the measured value, it warns.

ZC 3062							
400 V (50-60 Hz) (kW)	6-8 bar (l/trdk)	kg	W x L x H (mm)	L(min.) x L(max.) (mm)	a x h (mm)	ØD x Ød x b (mm)	X x Y x Z (mm)
24	350	11250	10370 x 3330 x 2845	— x 6500	650 x 350	200 x 32 x 2 500 x 30 x 4	7000 x 1425 x 747
ZC 3063							
400 V (50-60 Hz) (kW)	6-8 bar (l/trdk)	kg	W x L x H (mm)	L(min.) x L(max.) (mm)	a x h (mm)	ØD x Ød x b (mm)	X x Y x Z (mm)
24	350	17220	14330 x 4330 x 2820	— x 10500	650 x 350	200 x 32 x 2 500 x 30 x 4	11050x1425x747
ZC 3064							
400 V (50-60 Hz) (kW)	6-8 bar (l/trdk)	kg	W x L x H (mm)	L(min.) x L(max.) (mm)	a x h (mm)	ØD x Ød x b (mm)	X x Y x Z (mm)
24	380	22400	18300 x 4330 x 2820	— x 14480	650 x 350	200 x 32 x 2 500 x 30 x 4	15025x1425x747

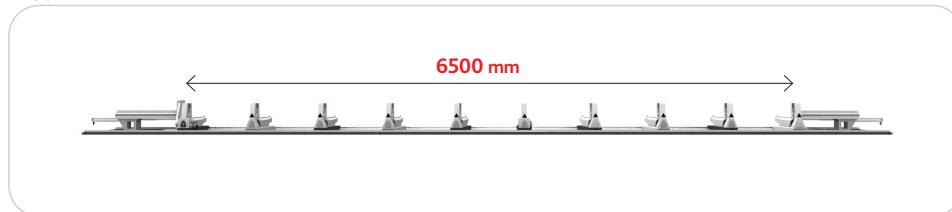
### Control Panel



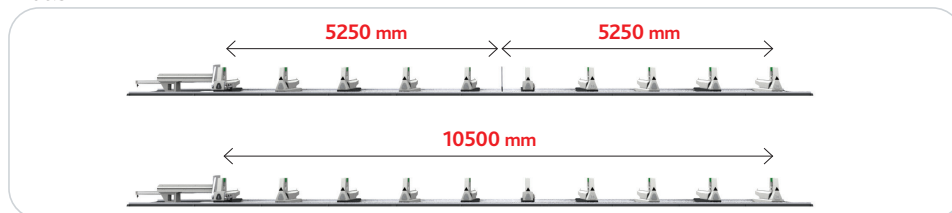
- 19" touch led screen.
- Easy to use and flexible operating system and interface.
- Mitsubishi CNC control unit.
- Numerical processing with G-Code transferred from CAD-CAM software.
- It communicates with programs that extract .ncx files.
- High performance machine management.
- Easy parameter settings.
- It has periodic maintenance reminder function.
- Service support with remote connection.
- Usb and Com Port input.

### Clamps

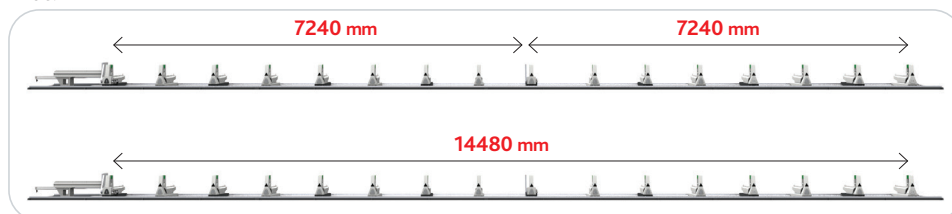
Mod.2



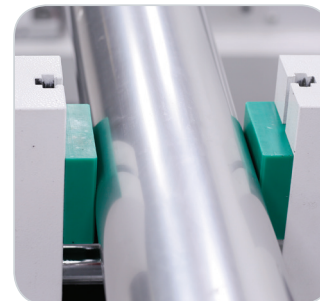
Mod.3



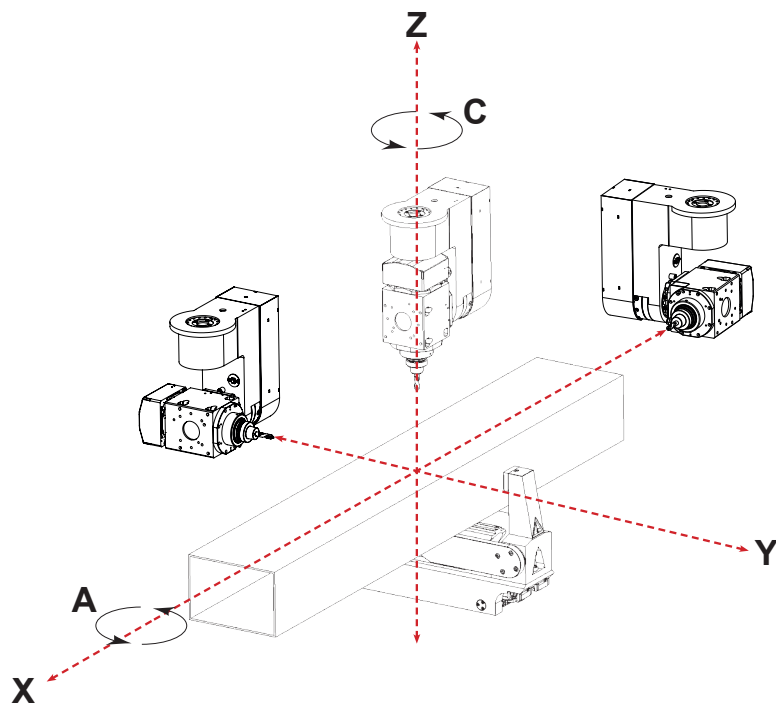
Mod.4



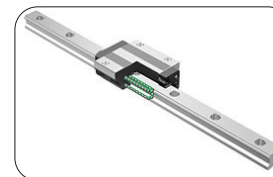
- Since the clamp constants are at the front, the profile loading process is very easy.
- The standard module has 10 clamps with 2 types.
- Roller system of the surfaces where the profile is placed provides the comfort of profile sliding.
- According to the receipts on the workpiece, the clamps receive servo-controlled automatic position.
- Easy piece referencing with double-sided profile support system.
- Long length profile processing is available. With Ø500 mm saw blade, it makes milling from the ends of the profiles.
- Thanks to the pressure regulator, the clamp tightness can be adjusted according to the profile thickness.
- Pieces smaller than 300mm can be held and cut with a single clamp.
- Thanks to the profile conveying system with the clamp, the saw can easily be inserted between the profiles.





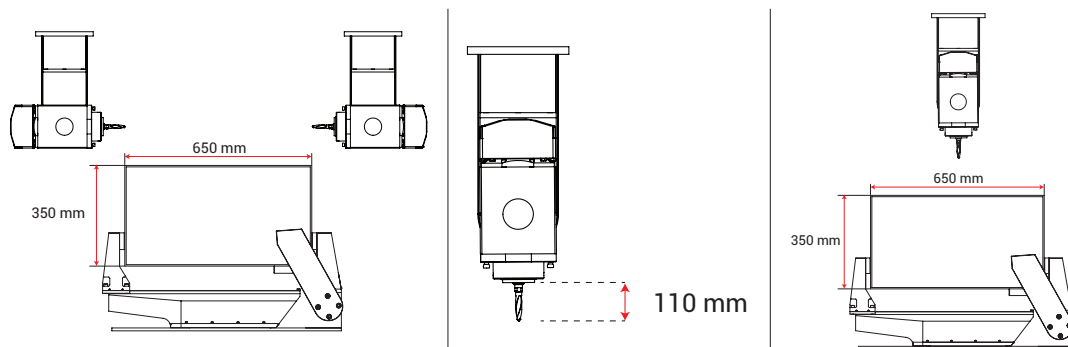


## Bearing System



- High quality bearings suitable for high speeds whose gap class is zero.

ZC 3060					
Motor Specifications	Power (kW)	Motor Speed (rpm)	Angular Speed (°/dk)	Axis Speed (m/dk)	Reductor
Spindle Motor (HSD ES779)	12,00	24000	-	-	-
X Axis Servo Motor	3,50	3000	-	144	PSFN 140 - i:10
Y Axis Servo Motor	1,50	3000	-	40	PSFN 110 - i:25
Z Axis Servo Motor	1,00	3000	-	30	-
A Axis Servo Motor	0,75	3000	160	-	Spinea i:115
C Axis Servo Motor	0,75	4000	210	-	Spinea i:115
Magazine Servo Motor	0,75	4000	-	-	AD 110 i:61
Clamp Servo Motor	0,75	4000	-	-	SD 90 i:50



## Optional Equipments

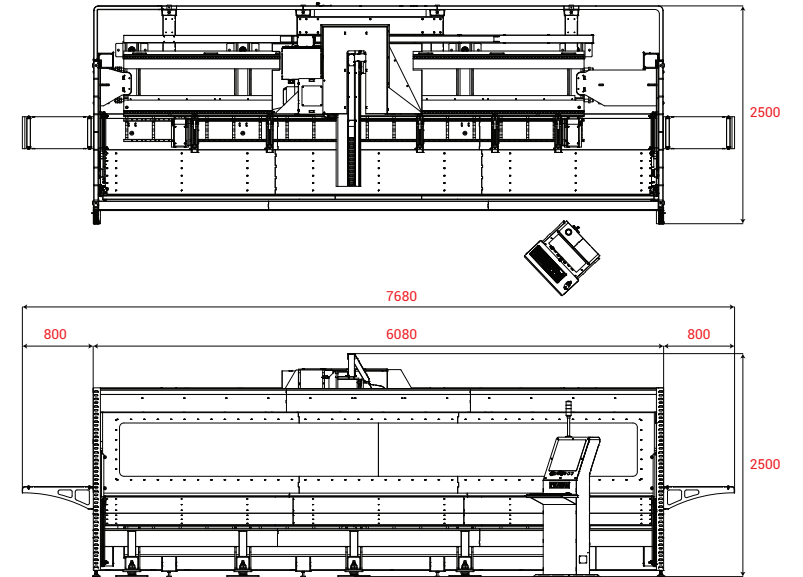
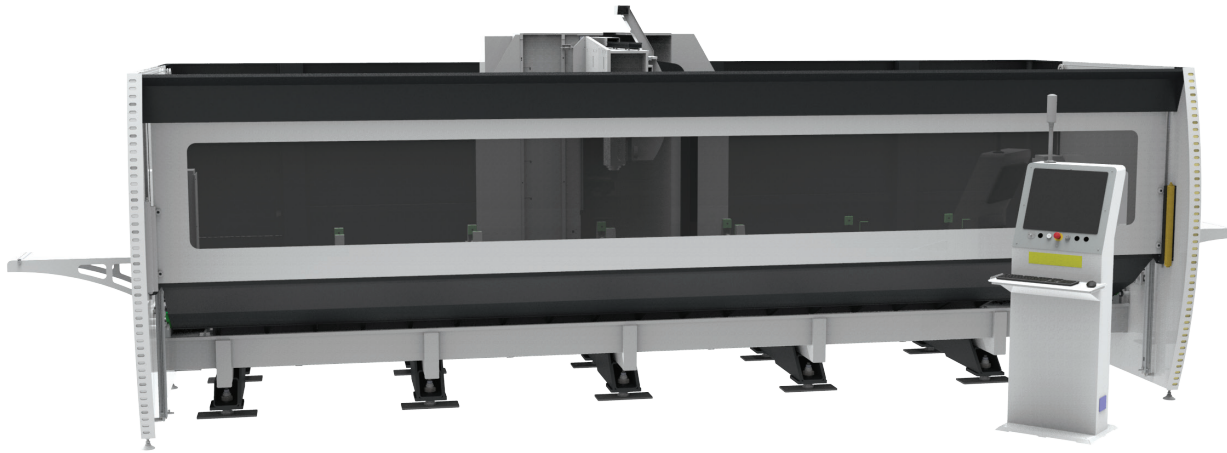
- Bottom surface of profile can be processed with optional 90° tool.
- Piece, hole, surface shifting, profile length and width measurements can be made with the optional Renishaw probe.
- 7 meters processing dimension in two separate stations and 14.5 meters processing dimension in total. (with length option)
- Tool chuck can be selected as A63 or F63 according to motor.

# ZC 4030

## 3 Axis Aluminium Machining Center

# ZC 4040

## 4 Axis Aluminium Machining Center



### General Features

- Standard model has 6 clamps and tool chuck with 8 tool holding capacity.
- In order to ensure continuous precision, stress relieving method is applied in cast and welded pieces.
- The absence of any material that could be damaged in the areas where sawdusts and wastes fall provides a long life.
- Profile sliding convenience on clamp surface since the surface where profile seats on is roll system.
- Automatic positioning of clamps with servo control according to receipts on a piece for machining.
- Automatic recovery of working shaft from profile by means of a program in case of power outage.
- Long-life moving parts with automatic lubrication system.
- Robust Mechanical Design suitable for high speed and acceleration.
- Easy to use and flexible operating system and interface.
- Machine management ensuring high performance.
- Periodical maintenance reminder function.
- Easy adjustment of parameters.
- Service support via remote connection.
- Mitsubishi CNC M720VW control unit, internal HDD, optical communication, high speed and precision, 0.001mm command increment and Ethernet.

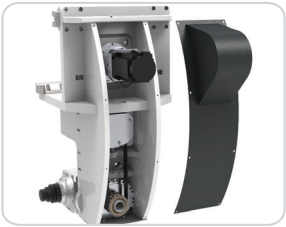
### ZC 4030

400 V (50-60 Hz) (kW)	6-8 bar (t/dk)	kg	W x L x H (mm)	L (min.) x L (max.) (mm)	a x h (mm)	ØD x Ød x b (mm)	X x Y x Z (mm)
19	300	6700	7680 x 2500 x 2500	— x 4160	300 x 300	200 x 32 x 2	4385 x 1250 x 590

### ZC 4040

400 V (50-60 Hz) (kW)	6-8 bar (t/dk)	kg	W x L x H (mm)	L (min.) x L (max.) (mm)	a x h (mm)	ØD x Ød x b (mm)	X x Y x Z (mm)
19	300	6700	7680 x 2500 x 2500	— x 4160	300 x 300	200 x 32 x 2	4385 x 1250 x 590

## Spindle



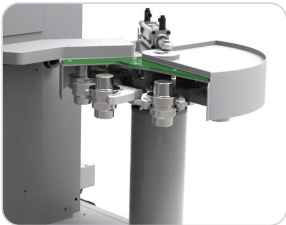
- Hiteco branded, thermostat sensor and liquid cooled 8.5 kW max. 24.000 rpm spindle.
- Tool cooling system with oil-air mixture spraying, speed adjustment and liquid level sensor.
- HSK tool holder and tool holder cleaning system.
- Tool change security protocols written to reduce operator errors as much as possible.

## Control Panel



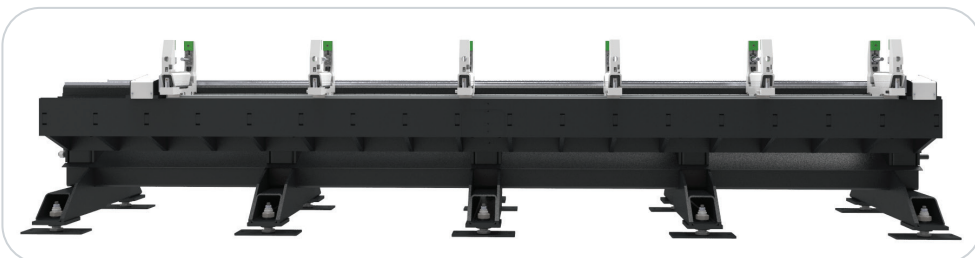
- Easy to use and flexible operating system and interface.
- Mitsubishi FX-5 control unit.
- Numerical processing with G-Code transferred from CAD-CAM software.
- It communicates with programs that extract .ncx files.
- High performance machine management.
- Easy parameter settings.
- It has periodic maintenance reminder function.
- Service support with remote connection.
- Usb and Com Port input.

## Magazine



- 8 tool capacity magazine.
- Tool change feature in 8 seconds.
- Time saving by changing the tool when passing from one operation to another one on the piece.

## Clamps



- The standard module has 6 clamps.
- Roller system of the surfaces where the profile is placed provides the comfort of profile sliding.
- According to the receipts on the workpiece, the clamps receive servo-controlled automatic position.
- Easy piece referencing with double-sided profile support system.
- Long length profile processing is available. With Ø200 mm saw blade, it makes milling from the ends of the profiles.
- Thanks to the pressure regulator, the clamp tightness can be adjusted according to the profile thickness.

### ZC 4030

Motor Specifications	Power (kW)	Motor Speed (rpm)	Angular Speed (°/dk)	Axis Speed (m/dk)	Reductor
Spindle Motor (Hiteco QX-2 8.5)	8,50	24000			
X Axis Servo Motor	3,50	3000		192	PSFN 140 - i=7
Y Axis Servo Motor	0,75	4000		72	PSFN 90 - i=20
Z Axis Servo Motor	0,75	4000		40	
A Axis Servo Motor	-	-	-	-	-
Magazine Servo Motor	0,40	4000			SD090-P2 i=70

### ZC 4040

Motor Specifications	Power (kW)	Motor Speed (rpm)	Angular Speed (°/dk)	Axis Speed (m/dk)	Reductor
Spindle Motor (Hiteco QX-2 8.5)	8,50	24000			
X Axis Servo Motor	3,50	3000		192	PSFN 140 - i=7
Y Axis Servo Motor	0,75	4000		73	PSFN 90 - i=20
Z Axis Servo Motor	0,75	4000		40	
A Axis Servo Motor	0,75	4000	180		Spinea i115
Magazine Servo Motor	0,40	4000			SD090-P2 i=70

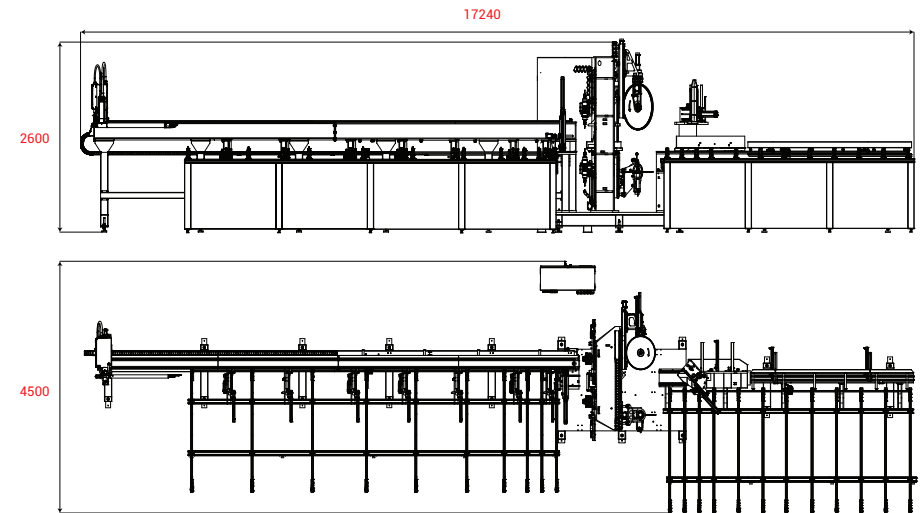
## UTILITY MODEL DOCUMENT / NO: TR 2014 01271 Y

This document has been issued for 10 years from 04.02.2014 pursuant to article 162 of the Decree Law on Protection of Patent Rights No. 551.




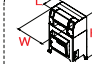

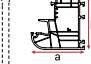
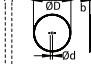
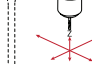


### General Features

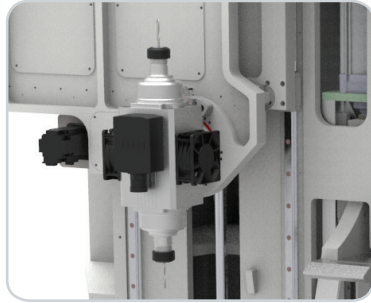
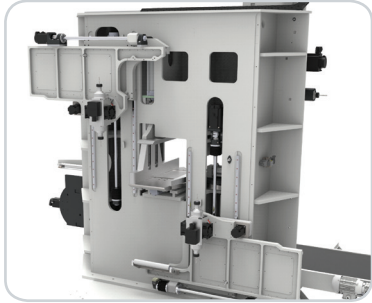
- Cutting and milling operations of profiles.
- Maximum profile length of entry conveyor is designed to be 8 meters.
- Maximum profile length of exit conveyor is designed to be 5 meters.
- In order to ensure continuous precision, stress relieving method is applied in cast and aluminium pieces.
- Wastes can be evaluated by optimizing automatically within cutting lists.
- Algorithm suitable for minimum waste maximum production principle.
- Profile conveying and positioning, automatic profile recognition feature.
- Cut pieces are automatically transferred to conveyor by exit robot.
- Tool cooling system with speed adjustment of oil-air mixture spraying and liquid level sensor.
- Warning system that prevents incorrect profile placement.
- Periodical maintenance reminder function.
- Easy adjustment of parameters.
- Robust mechanical system suitable for higher speed.
- 6 profiles can be loaded to entry conveyor.
- Automatic greasing system.



### ZK 3020

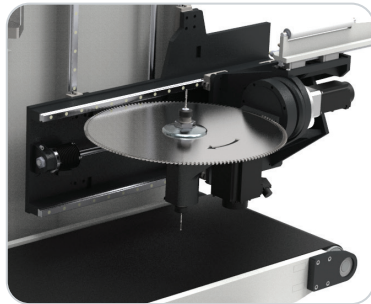
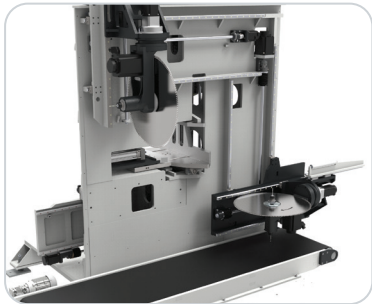
 400 V (50-60 Hz) (kW)	 6-8 bar (l/r/dk)	 kg	 W x L x H (mm)	 L (min.) x L (max.) (mm)	 a x h (mm) Kesim 300 x 250 İçleme 250 x 250	 ØD x Ød x b (mm)	 X x Y x Z (mm)
32	300	10650	17240 x 4500 x 2600	— x 8000	15 x 50	600 x 40 4,4	

## Spindle



- Servo motor controlled machining unit that enables performing all required actions on four surfaces of piece to be processed.
- Double milling tipped hertz motor in servo controlled 2 separate machining group.
- Angles of machining group moves 360°.
- Max. Machining of profile with 250x250mm dimensions.
- Ability to process on both sides thanks to reciprocal servo motors on milling unit.

## Saw



- 2 saws that are Vertically and Horizontally positioned and 0-270° rotatable.
- Aluminium profile is cut by carrying with servo controlled robot.
- Adjustable saw progress speed.
- Saw diameter: Ø600mm
- Saw revolution: 1400 rpm
- Maximum cutting profile dimensions: 300mm (width) x 250mm (height)
- Minimum cutting profile dimensions: 15mm (width) x 50mm (height)

## Control Panel

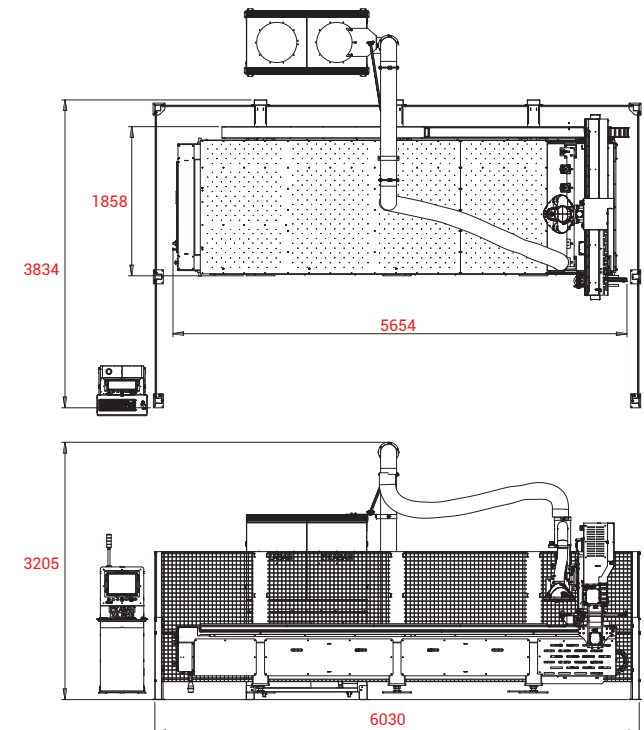


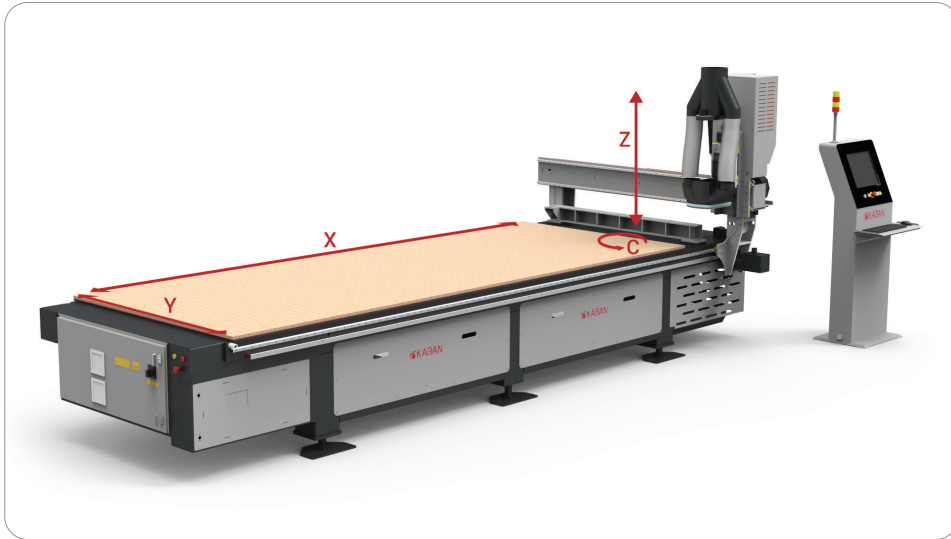
- It communicates with programs that extract .ncx files.
- 19" Industrial PC
- USB and COM Ports.
- Service support via remote connection.



### General Features

- Mainly used in construction sector as well as in furniture, advertising, shipbuilding, automotive and aviation sectors.
- Optimization of sheets and processing of 2D and 3D geometrical figures through easy to use CAD/CAM program interface.
- High quality processing of pieces in various dimensions with its vacuumed multishell top surface and cleanable table structure.
- Pneumatically running reference pins for positioning of pieces easily.
- Numerical processing with G-Code transferred from CAD-CAM software.
- Automatic tool change and tool length measuring system.
- Fast and high quality processing with precise components.
- Automatic selection of vacuum section according to piece dimensions.
- Tool chuck with 6 tool holding capacity in standard model.
- Clean working area thanks to sawdust absorbing system.
- Machine management ensuring high performance.
- Easy to use and flexible operating system.
- Service support via remote connection.
- Easy adjustment of parameters.
- Running with Mitsubishi FX-5 control unit.
- USB and COM Ports.
- Automatic recovery of working shaft from profile by means of a program in case of power outage.
- Protection of machine computer and restarting the interrupted program thanks to UPS.










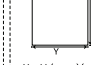


VA 3010					
Motor Specifications	Power (kW)	Motor Speed (rpm)	Angular Speed (°/dk)	Axis Speed (m/dk)	Reductor
Spindle Motor	7,50	24000	-	-	-
X Axis Servo Motor 1	0,75	3000	-	72,00	i : 15
X Axis Servo Motor 2	0,75	3000	-	72,00	i : 15
Y Axis Motor	0,75	3000	-	72,00	i : 10
Z Axis Motor	0,75	3000	-	30,00	-
Dust Pump Motor	3,00	3000	-	-	-
Vacuum Pump Motor	5,50	1000	-	-	-

## Optional Equipments



- C Axis 360 ° rotation feature with 0,1° precision. It cuts with the saw on 90 ° tool.

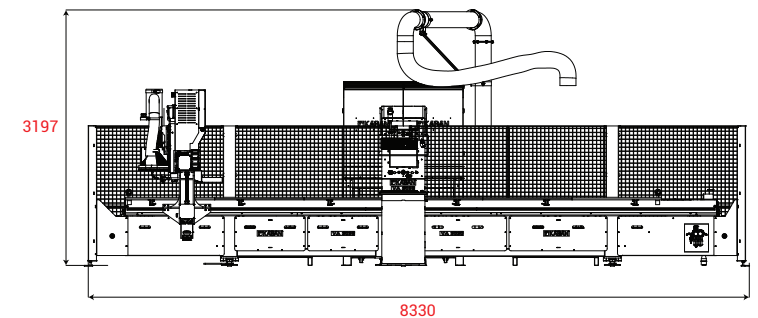
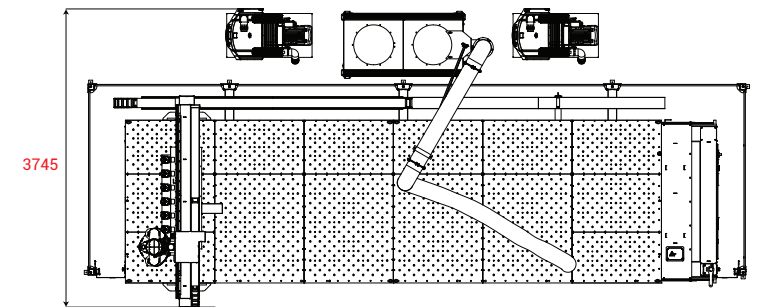
### VA 3010

 400 V (50-60 Hz) (kW)	 6-8 bar (lt/dk)	 kg	 W x L x H (mm)	 X x Y (min.)(mm)	 X x Y (max.)(mm)	 X x Y x Z (mm)	 Kapasite / Capacity
20	450	3985	6030 x 3834 x 3205	300x300	1600x4300	4640x1830x250	15000 mm/dk

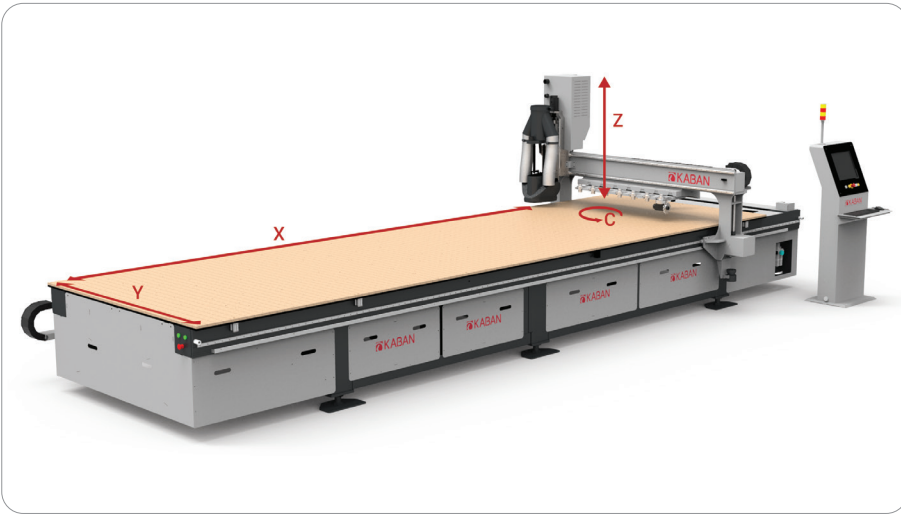


### General Features

- Mainly used in construction sector as well as in furniture, advertising, shipbuilding, automotive and aviation sectors.
- Optimization of sheets and processing of 2D and 3D geometrical figures through easy to use CAD/CAM program interface.
- High quality processing of pieces in various dimensions with its vacuumed multishell top surface and cleanable table structure.
- Continuous working on double zone thanks to standard area scanning sensor and reference pins.
- Pneumatically running reference pins for positioning of pieces easily.
- Numerical processing with G-Code transferred from CAD-CAM software.
- Automatic tool change and tool length measuring system.
- Fast and high quality processing with precise components.
- Automatic selection of vacuum section according to piece dimensions.
- Tool chuck with 6 tool holding capacity in standard model.
- Clean working area thanks to sawdust absorbing system.
- Machine management ensuring high performance.
- Periodical maintenance reminder function.
- Easy to use and flexible operating system.
- Service support via remote connection.
- Easy adjustment of parameters.
- Running with Mitsubishi FX-5 control unit.
- USB and COM Ports.
- Time saving due to tool change while machine is in operation.
- Automatic recovery of working shaft from profile by means of a program in case of power outage.
- Protection of machine computer and restarting the interrupted program thanks to UPS.










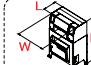

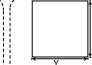
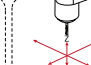

VA 3030					
Motor Specifications	Power (kW)	Motor Speed (rpm)	Angular Speed (°/dk)	Axis Speed (m/dk)	Reductor
Spindle Motor	7,50	24000	-	-	-
X Axis Servo Motor 1	0,75	3000	-	72,00	i : 15
X Axis Servo Motor 2	0,75	3000	-	72,00	i : 15
Y Axis Motor	0,75	3000	-	72,00	i : 10
Z Axis Motor	0,75	3000	-	30,00	-
Dust Pump Motor	3,00	3000	-	-	-
Vacuum Pump Motor	5,50	1000	-	-	-

## Optional Equipments



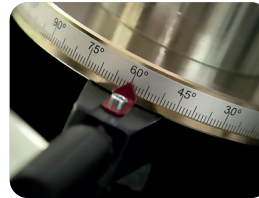
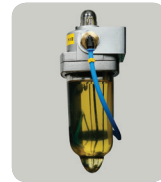
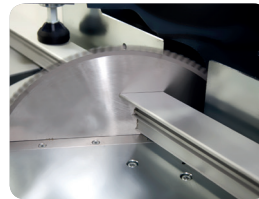
- C Axis 360 ° rotation feature with 0,1° precision. It cuts with the saw on 90 ° tool.

### VA 3030

 400 V (50-60 Hz) (kW)	 6-8 bar (t/dk)	 kg	 W x L x H (mm)	 X x Y (min.)(mm)	 X x Y (max.)(mm)	 X x Y x Z (mm)	 Kapasite / Capacity
25	450	5225	8330 x 3745 x 3197	300x300	2000x6600	6650x2000x180	15000 mm/dk

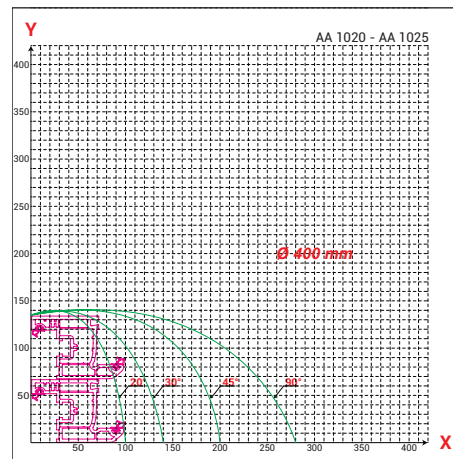
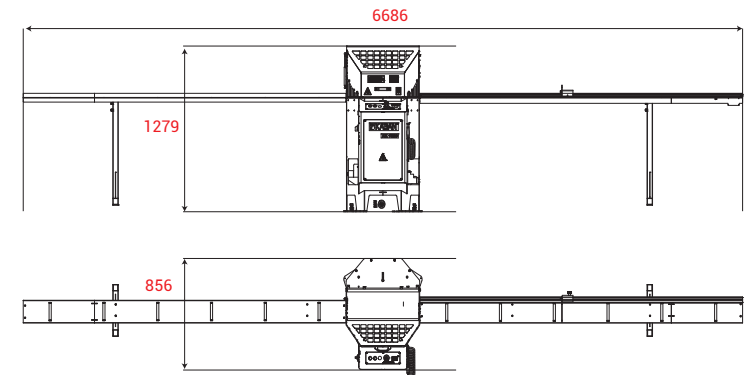
# AA 1025

## Single Head Mitre Saw for Aluminium



- Upward saw.
- Adjustable saw progress speed.
- Maximum safety with cover safety key.
- Long-lived saw and vibration free operation thanks to cast saw cover.

- Reference points for each 5 degree.



### General Features

- Precise cutting of Aluminium profiles between 20° - 160° degrees.
- Has lubrication system.
- Support pins to fix the angles at 45° and 90° degrees.
- Precise angle adjustment with vertical bearing system.

### AA 1025

400 V (50-60 Hz) (kW)	6-8 bar (l/dk)	kg	W x L x H (mm)	L (min.) x L (max.) (mm)	a x h (mm) (min.)	a x h (mm) (max.)	ØD x Ød x b (mm)
1,5	240	291	6686 x 856 x 1279	352 x 3220	20 x _	100 x 145	400 x 32 x 4,0

### Optional Equipments



• DS 530 L/R Digital Measuring System  
4014 mm



• DS 100 L/R Man. Digital Measuring System  
3220 mm



• DS 200 L/R Rotating Arm Digital Meas. System  
3140 mm

# Aluminium Cutting Machines

HA 2010

HA 2012

HA 2014

HA 2016

**HA 2010**  
Single Head Saw-Pneumatical Clamp



148 kg

**HA 2012**  
Single Head Saw-Manual Clamp



148 kg

**HA 2014**  
Portable Single Head Saw-Pneumatical Clamp



69 kg

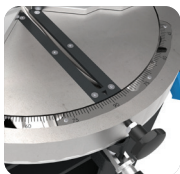
**HA 2016**  
Portable Single Head Saw-Manual Clamp



69 kg



- Saving of time thanks to rotating plate after profile ends are cut.



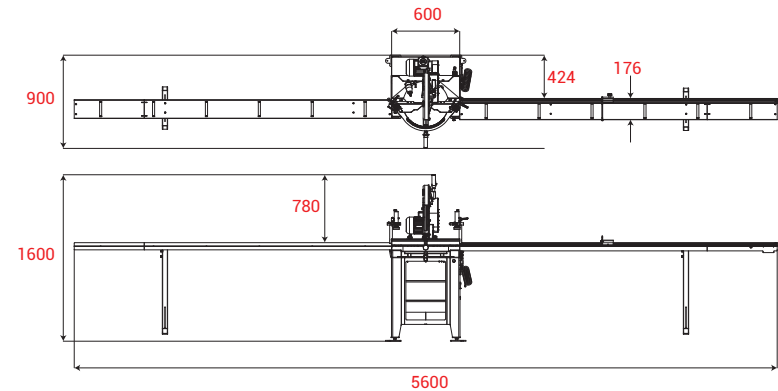
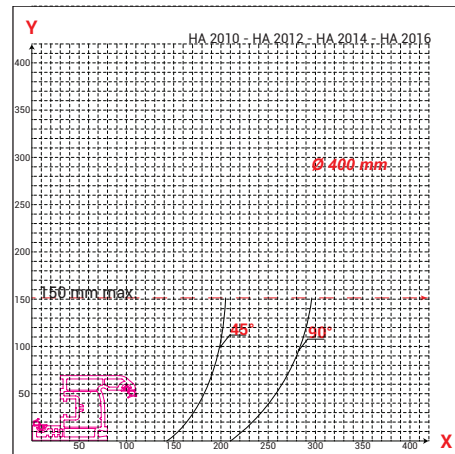
- Practical positioning on each 5°.
- Possibility to fixing at intermediate angles.
- +45°, -45° cutting.



- Double safety system.

## General Features

- Precise cutting of Aluminium profiles.
- Has lubrication system.
- High quality with economical prices.
- Patented glazing bead apparatus.



### HA1010 - HA2010

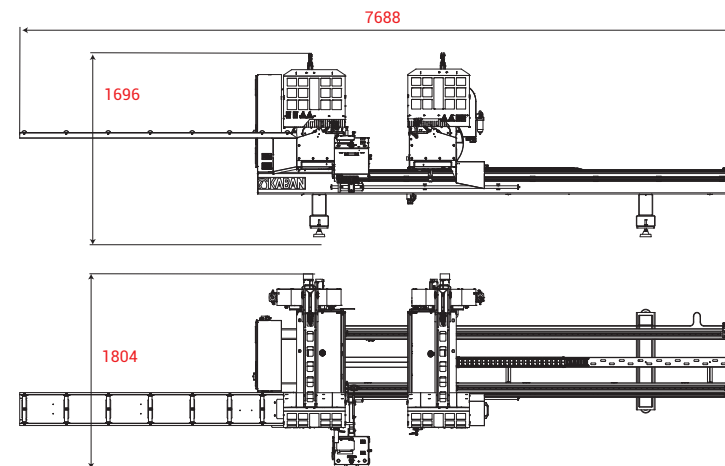
400 V (50-60 Hz) (kW)	6-8 bar (t/dk)	kg	W x L x H (mm)	L (min.) x L(max.) (mm)	a x h (mm) (min.)	a x h (mm) (max.)	ØD x Ød x b (mm)
1,1	100	160	5600 x 900 x 1600	320 x 3200	20 x 20	120 x 120	400 x 32 x 4,0

### HA1014 - HA2014

400 V (50-60 Hz) (kW)	6-8 bar (t/dk)	kg	W x L x H (mm)	L (min.) x L(max.) (mm)	a x h (mm) (min.)	a x h (mm) (max.)	ØD x Ød x b (mm)
1,1	100	70	600 x 900 x 800	320 x 3200	20 x 20	120 x 120	400 x 32 x 4,0

# AC 1050






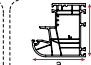
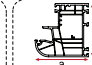
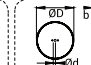
## Servomotor Controlled Double Head Aluminium Cutting Machine



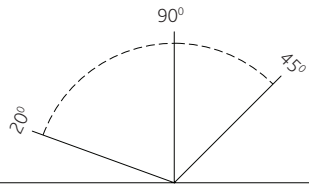
### General Features

- Precise cutting of Aluminium profiles between 20°-135°.
- Has lubrication system.
- Left feeding table and automatic saw safety cover.
- Profile support arm between two heads.
- Special vacuum system to cut without depositing sawdust on heads.
- Profile height measuring system.
- Automatic slicing system.

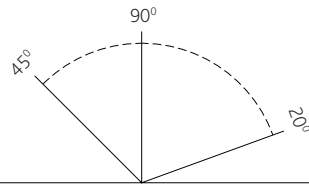
### AC 1050

 400 V (50-60 Hz) (kW)	 6-8 bar (t/dk)	 kg	 W x L x H (mm)	 L(min.) x L(max.) (mm)	 a x h (mm) (min.)	 a x h (mm) (max.)	 ØD x Ød x b (mm)
6,5	320	1250	7688 x 1804 x 1696	400 x 6400	— x 20	180 x 200	550 x 30 x 4,4

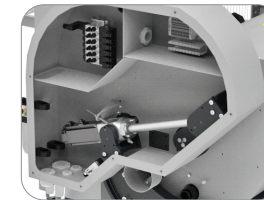
### FIXED HEAD



### MOVING HEAD



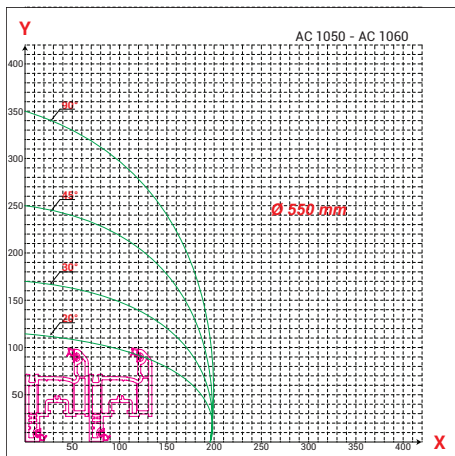
- On auto mode, it goes to position without operator intervention.
- Option to work with CF Card.
- 1850 different cutting length memory capacity.



- Precise cutting at inner 45°, outer 20° thanks to patented control system.



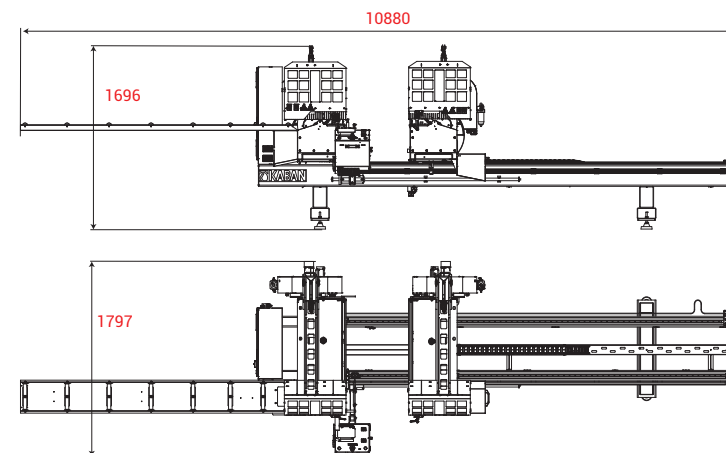
- Hydropneumatical system provides precise cutting quality.
- Horizontal profile clamping and practical piston place adjustment system.



### Optional Equipments








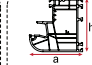
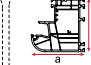
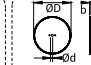
- BY 100 Barcode Printer
- BB 200 R Feeding Table
- F 100 E Feeding Table (Additional)
- KP 100 Cutting Program



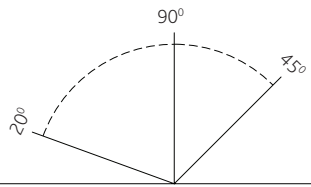
### General Features

- Servo controlled precise cutting of PVC and aluminium profiles between 20° - 135° angles.
- Measuring system for profile height.
- Standard left feeding stand.
- Special vacuum system to cut without depositing sawdust on heads.
- Profile support arm between two heads in order to avoid bending.
- Automatic slicing system.
- Cooling system.

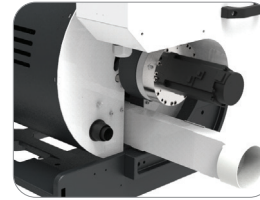
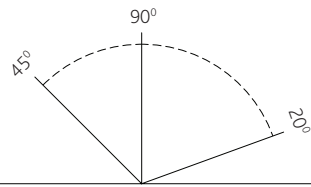
### AC 1060

 400 V (50-60 Hz) (kW)	 6-8 bar (ft/dk)	 kg	 W x L x H (mm)	 L (min.) x L(max.) (mm)	 a x h (mm) (min.)	 a x h (mm) (max.)	 ØD x Ød x b (mm)
10	300	1750	10880 x 1797x 1696	400 x 7000	180 x 200	_ x 20	550 x 30 x 4,4

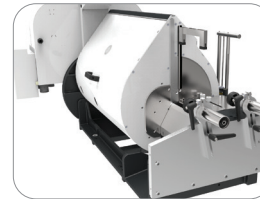
### FIXED HEAD



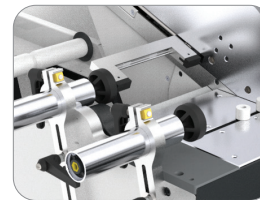
### MOVING HEAD



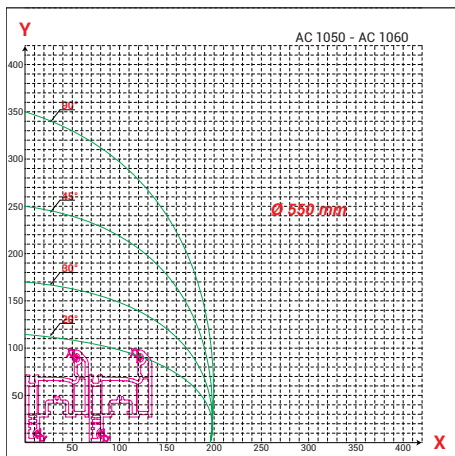
• Precise cutting at inner 45°, outer 20° thanks to patented control system.

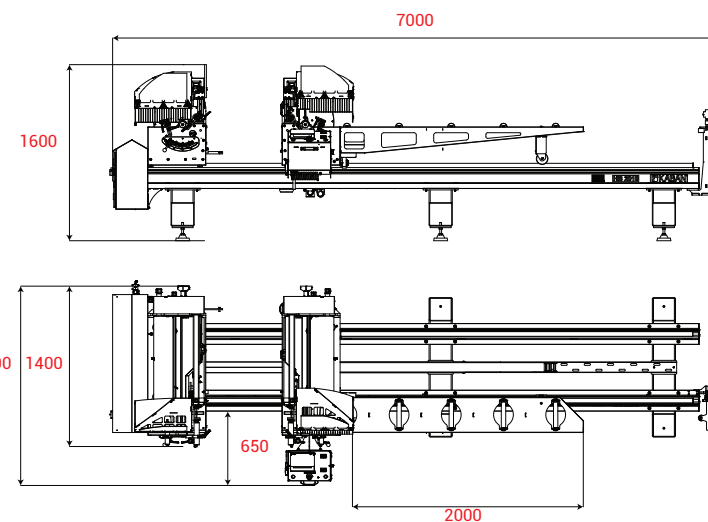


• Profile height measuring system.



• Horizontal profile clamping and practical piston place adjustment system.





### General Features

- Precise cutting of Aluminium profiles between 22,5°-90° outer angles.
- Right feeding unit and automatic saw safety cover.
- Double clamping system on both heads to fix the profile.
- Support plate between two heads to support the profile.
- Special design vacuum system to cut without depositing sawdusts on heads.
- Profile height measurement system.
- Frontal and top clamping systems.
- Precise and fast measure positioning thanks to brake system.

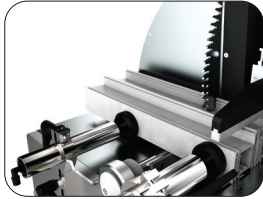
### HB 2010

400 V (50-60 Hz) (kW)	6-8 bar (l/dk)	kg	W x L x H (mm)	L (min.) x L (max.) (mm)	a x h (mm) (min.)	a x h (mm) (max.)	ØD x Ød x b (mm)
4,8	125	1100	7000 x 1800 x 1600	300 x 6400	_ x 20	180 x 200	550 x 40 x 4,4





- On auto mode, it goes to position without operator intervention.
- Option to work with SD Card.
- 1250 different cutting length memory capacity.
- Has ethernet connection.
- Cutting file transfer from computer.



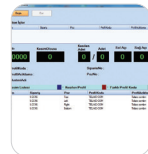
- High cutting quality and ease of operation.
- Adjustable saw progress speed.
- Horizontal profile clamping and practical piston place adjustment system.



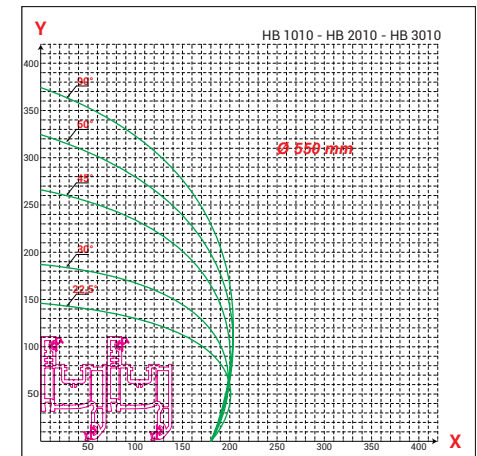
### Optional Equipments



- E 200 Barcode Printer (ethernet)

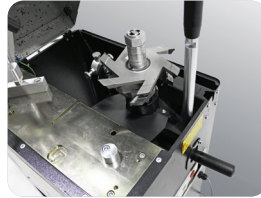


- KP 100 Cutting Program





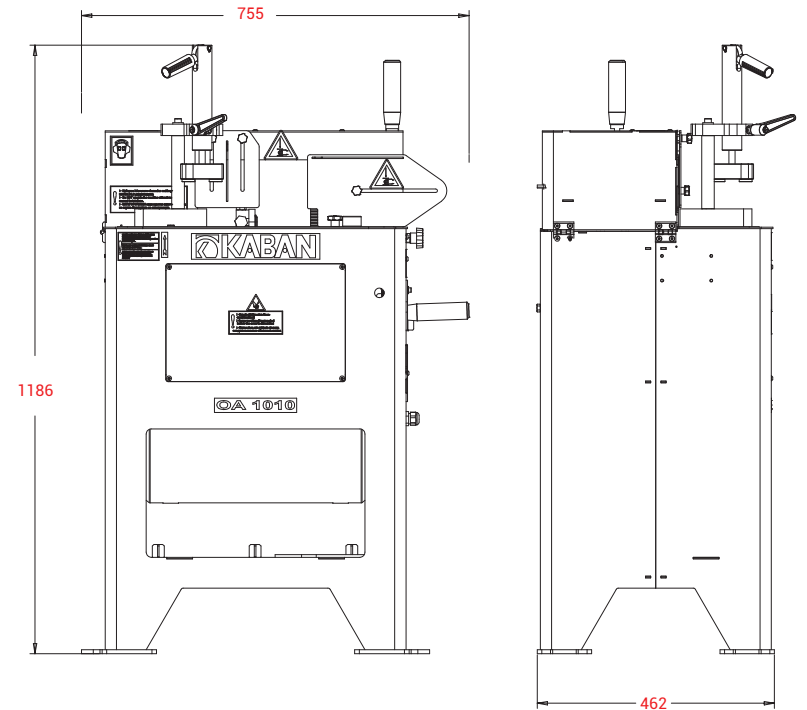
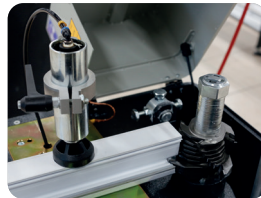
### Cutter Change System



### Has lubrication system



### End Milling



### General Features




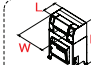
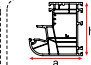
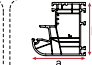
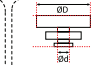
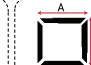
- End milling operation on Aluminium profiles at 45° and 90°.
- Has lubrication system.
- Easily adjustable angular and eccentric support plates.
- Safe operation with safety covers.
- Cutter storing with cutter shelf.

### Optional Equipments



- End Milling Cutters

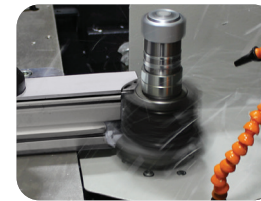
### OA 1015

							
400 V (50-60 Hz) (kW)	6-8 bar (t/dk)	kg	W x L x H (mm)	a x h (mm) (min.)	a x h (mm) (max.)	ØD x Ød x b (mm)	A x B (mm)
1,5	50	101	756 x 462 x 1186	35 x 35	130 x 120	230 x 32 x 130	-



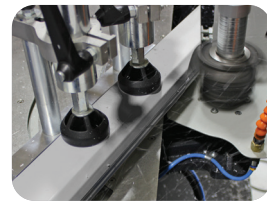
### Flat Cutter End Milling:

- End milling with flat cutter at  $-22,5^{\circ}$ ,  $+45^{\circ}$  range.



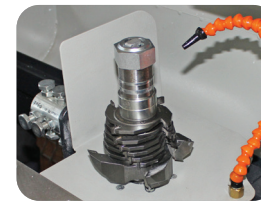
### End Milling:

- Support system adjustable to four different profiles.
- High quality end milling thanks to hydropneumatic system.



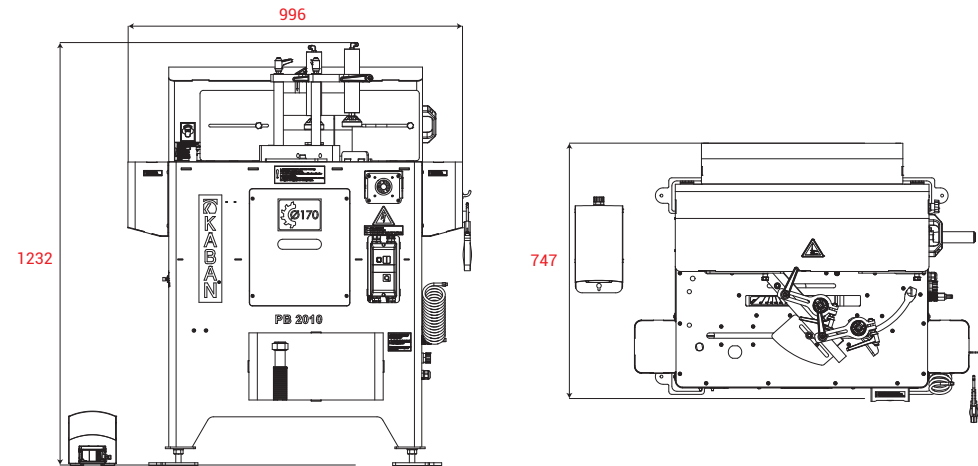
### Reverse Cutter End Milling:

- End milling with reverse cutter at  $-22,5^{\circ}$ ,  $-45^{\circ}$  range.



### Cutter Change System:

- Practical cutter change system provides ease of operation.



## General Features

- End milling of Aluminium profiles at  $22,5^{\circ}$   $+22,5^{\circ}$  range.
- Has lubrication system.
- Angle adjustment with mechanical support plates.
- Practical cutter progress speed adjustment.
- Safe operation with safety cover.
- Practical cutter adjustment thanks to cutter gab.
- Cutter storing with cutter shelf.

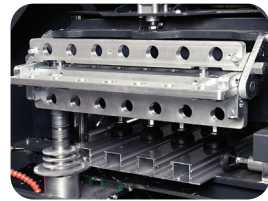
## Optional Equipments



- End Milling Cutters

### PB 2015

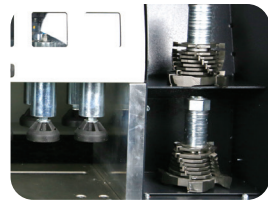
400 V (50-60 Hz) (kW)	6-8 bar (t/dk)	kg	W x L x H (mm)	a x h (mm) (min.)	a x h (mm) (max.)	$\varnothing D \times \varnothing d \times b$ (mm)	A x B (mm)
1,5	45	143	996 x 747 x 1232	35 x 35	130 x 120	180 x 30 x 130	-



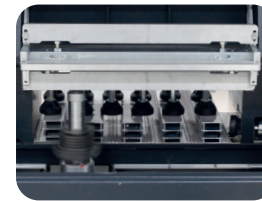
- Practical adjustment with rotating mechanical support plates.
- End milling of 1 to 6 profiles.
- Easy and safe cutter change as it is pneumatical and has special lock system.



- Side press pistons to provide end milling at setsquare.



- Front sections to store the cutters.



- End milling of 6 profiles at the same time.
- Thanks to screwed shaft system the speed is adjusted electronically to provide high quality products.

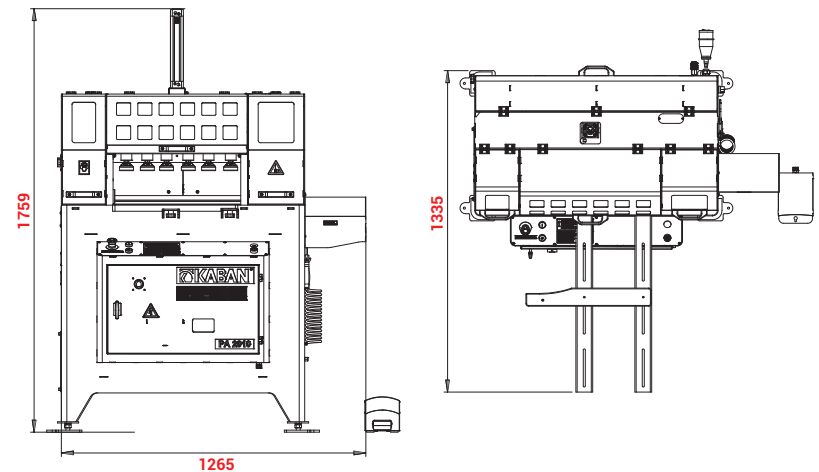
### General Features

- End milling of Aluminium profiles.
- Has lubrication system.
- Practical cutter progress speed adjustment thanks to screwed shaft system.
- Safe operation with safety cover.
- Electronical speed adjustment prevents profiles breakage while processing.
- Support arms in front of the machine to provide stable end milling of profiles up to 2.5 meters.




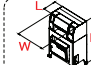
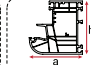
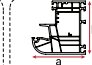
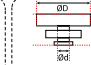
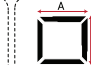
### Optional Equipments

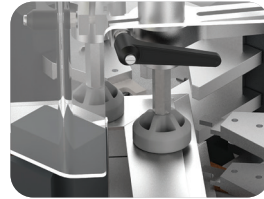


- End Milling Cutters

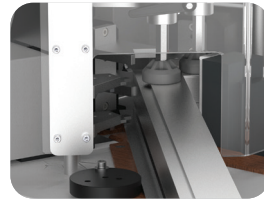


PA 2015

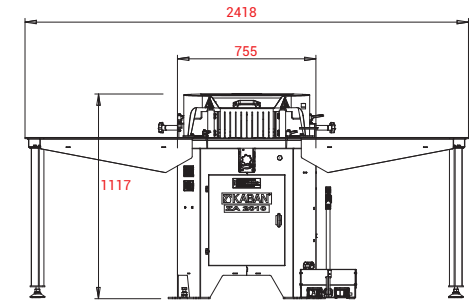
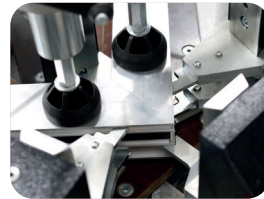
 400 V (50-60 Hz) (kW)	 6-8 bar (l/dk)	 kg	 W x L x H (mm)	 a x h (mm) (min.)	 a x h (mm) (max.)	 ØD x Ød x b (mm)	 A x B (mm)
2,05	380	344	1265 x 1335 x 1759	25 x 25	(*) x 120	210 x 30 x 130	-



- Mechanical adjustment of inner support plate.
- Easy adjusting of press blades.
- Free working area thanks to automatically descending inner support plate after operation.

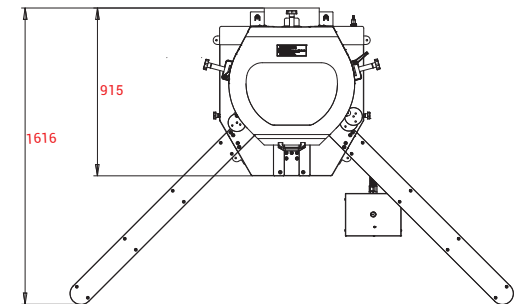


- Fiber material surface in order to protect profile surface.
- Elegant and transparent safety covers to provide a safe working area.



### Optional Equipments

Special blade sets for different profiles.

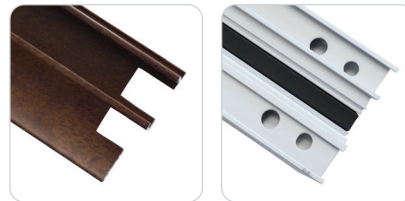
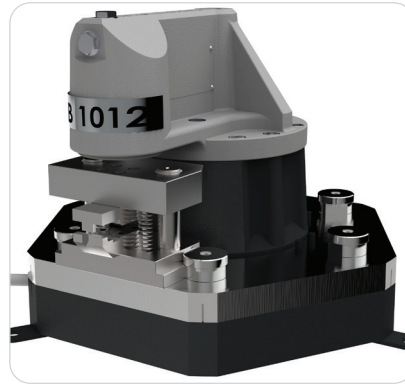


### General Features

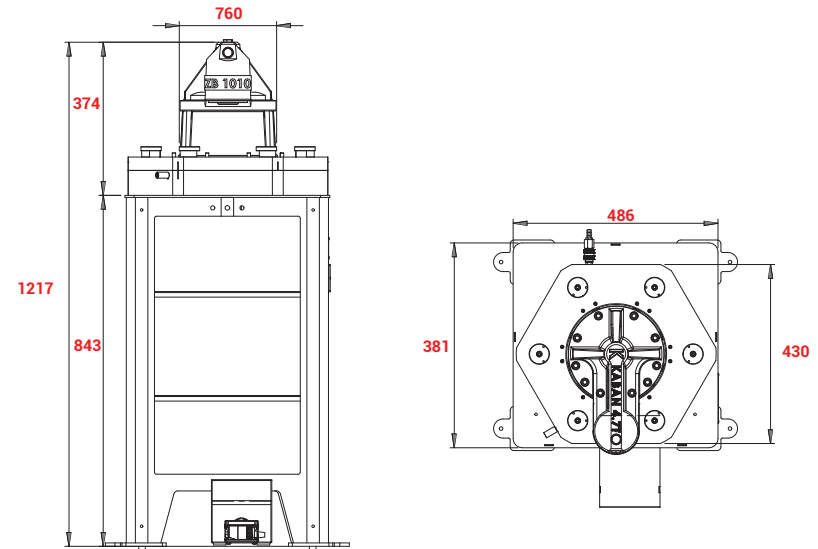
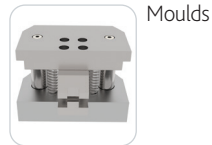
- Crimping of aluminium profile corners.
- Press units movement is adjusted on scale.
- Practical blade replacement.
- 6.000 kg press force with hydropneumatic system.
- Adjustable press time.
- Eco-friendly, non-electrical operation.

### ZA 2010

400 V (50-60 Hz) (kW)	6-8 bar (t/dk)	kg	W x L x H (mm)	a x h (mm) (min.)	a x h (mm) (max.)	A x B (mm) (min.)	A x B (mm) (max.)
-	55	374	2418 x 1616 x 1117	30 x 20	110 x 140 (175)	300 x 300	-



Optional Equipments



General Features

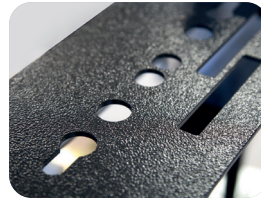
- It makes hole, canal ...etc. processes on aluminium profiles according to the mould.
- Press capacity is 4.7 ton.
- 6 moulds exist on press and different 6 moulds can be plugged without using clew.
- Operates with 6-8 bar air. It does not require electricity.
- Energy saving.
- Foot pedal to position the profile easily by two hands.
- Thanks to the rotating plate, the requested mould is brought in front of the press head easily.
- Plate rotating only by pressing to pin without using key.

ZB.1010

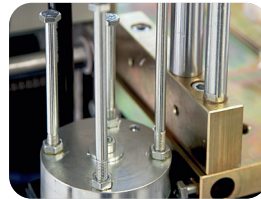
400 V (50-60 Hz) (kW)	6-8 bar (t/dk)	kg	W x L x H (mm)	L (min.) x L (max.) (mm)	a x h (mm) (min.)	a x h (mm) (max.)	A x B (mm)
	50	140	486 x 430 x 1217				-

ZB.1012

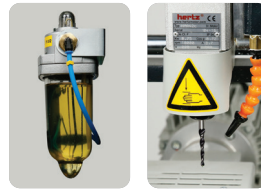
400 V (50-60 Hz) (kW)	6-8 bar (t/dk)	kg	W x L x H (mm)	L (min.) x L (max.) (mm)	a x h (mm) (min.)	a x h (mm) (max.)	A x B (mm)
	50	140	486 x 430 x 1217				-



- Manual control with the guideness of tracking tip.
- Copy routing with 1:1 ratio template.



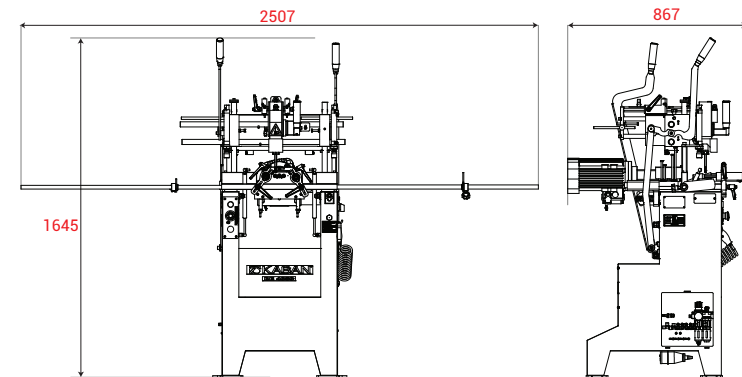
- Practical height adjustment with support stoppers.



### Optional Equipments



- MR 100 Centering Device

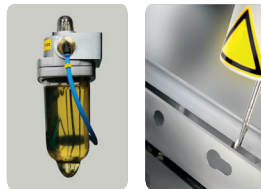
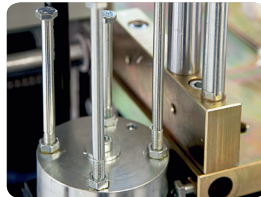


### General Features

- Espagnolette canal, lock, cylinder and handle holes opening and triple drilling on Aluminium profiles.
- Copy router motor runs with a button easily.
- Practical setting with mechanical support plates.
- Canal opening without template thanks to support plates.

### DE 4055

400 V (50-60 Hz) (kW)	6-8 bar (lt/dk)	kg	W x L x H (mm)	a x h (mm)	X x Y x Z (mm)	L x D1 x D2 (mm)	A (mm)
2,2	340	156	2507 x 867 x 1645	120 x 100 — x 5	95 x 260 x 105	120 x 8 x 8	260



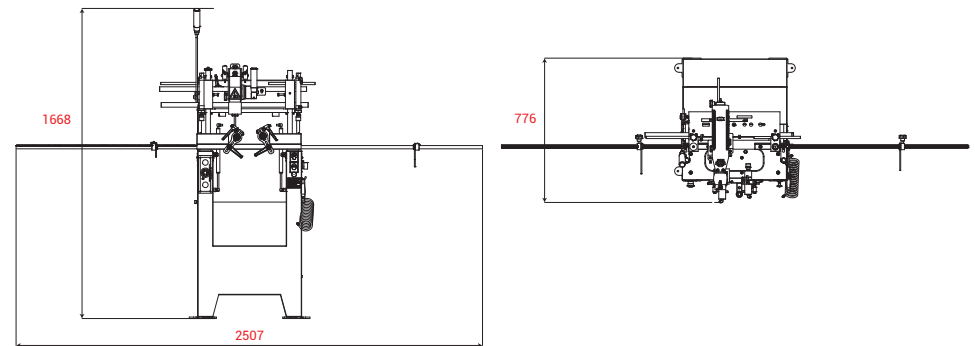
- Manual control with the guidedness of tracking tip.
- Copy routing with 1:1 ratio template.

- Practical height adjustment with rotating support stoppers.

### Optional Equipments



- MR 100 Centering Device



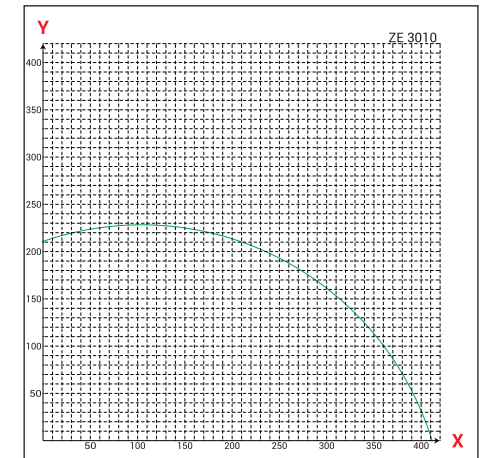
### General Features

- Opens the espagnolette canal, lock and barrel slot holes on the aluminum profiles.
- The copy routing motor is easily operated with one button.
- Thanks to the support mills, the canals are opened without template.

### DF 4065

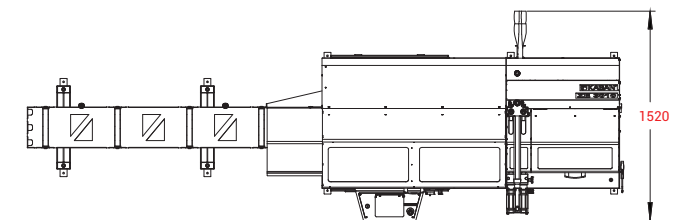
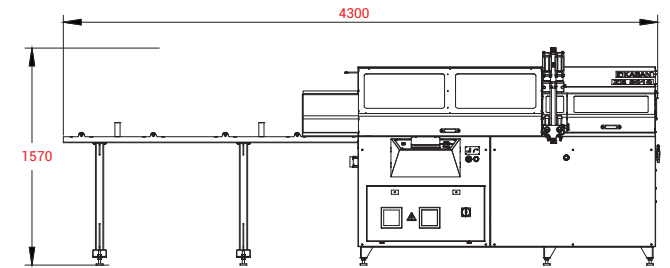
400 V (50-60 Hz) (kW)	6-8 bar (l/dk)	kg	W x L x H (mm)	a x h (mm)	X x Y x Z (mm)	L x D1 x D2 (mm)	A (mm)
1,4	340	115	2507 x 776 x 1668	120 x 100 — x 5	95 x 260 x 105	120 x 8 x 8	260





**General Features**

- Blade progress speed of servo controlled saw on Z axis can be adjusted precisely specific to profile.
- Aluminium profile is cut by carrying with servo controlled robot.
- Ø650 saw is used.
- Saw speed is 1400 rpm.
- The connection of profile with table and miter is cut during profile shifting thanks to profile lifting system specially designed to prevent scratches on aluminium profiles.
- Saw movement mechanism specially designed to prevent scratches on aluminium profiles.
- Robot shift and release system allows cutting of long profiles in precise dimensions.
- Left feeding table.
- Cutting operation continues as automatic cycle until the end of operation after profile placement.
- High quality and easy cutting.
- High level security with magnetic safety switch and piston on covers.



ZE 3010

400 V (50-60 Hz) (kW)	6-8 bar (t/dk)	kg	W x L x H (mm)	L (min.) x L (max.) (mm)	a x h (mm) (min.)	a x h (mm) (max.)	ØD x Ød x b (mm)
7	300	1210	4300 x 1520 x 1570	280 x 940	30 x 30	— x —	650 x 50 x 5



Components from respected brands are used in Kaban Machine product portfolio.

Kaban Machine reserves the right to change, alter or modify the products at any time in this catalog.





Hadımköy Atatürk Sanayi Bölgesi, Ömerli Mahallesi 75. Yıl Caddesi  
Uzunçayır Sokak No: 12 34555 Arnavutköy İstanbul - Turkey  
t: +90 212 866 25 00 (pbx) f: +90 212 771 16 83

**kaban.com.tr**